

W.F. Albright Institute of Archaeological Research

26 Salah ed-Din Street, P.O.Box 19096, 91190 Jerusalem, Israel • Tel. 6282131 • Fax 6264424 • E-mail: manager@albright.org.il

Program **2007/2008**





Reading room of the Albright Library
1984

MORE THAN A CENTURY OF SERVICE TO AMERICAN SCHOLARSHIP

The W.F. Albright Institute of Archaeological Research in Jerusalem is the oldest American research center for Ancient Near Eastern Studies in the Middle East. Founded in 1900 as the American School of Oriental Research (ASOR), it was renamed in 1970 after its most distinguished director, William Foxwell Albright. Today, the Albright is one of three separately incorporated institutes affiliated with ASOR, the others being in Amman and Nicosia. The present Albright facility was constructed in 1925, with additions made in 1930 and major renovations completed in 1985, 2003, and 2007. Located 500 meters north of the old walled city of Jerusalem, it is within easy walking distance of the École Biblique, the British, German, and Spanish Schools of Archaeology, the Hebrew Union College-Nelson Glueck School of Biblical Archaeology, the Hebrew University, the Rockefeller Museum, and the Israel Antiquities Authority. This grouping of scholarly facilities represents one of the heaviest concentrations of human, bibliographic, and artifact resources in Ancient Near Eastern Studies.

For the past 108 years, Albright/ASOR has provided students and scholars with an unparalleled international cultural environment and a unique program that spans the broad spectrum of Near Eastern Studies from prehistory to the early Islamic Period. Each year, Albright Fellows, primarily from the United States, Canada, Europe, Israel, and the Palestinian Authority, exchange information and ideas with hundreds of other local and foreign researchers, including those from other countries in the eastern Mediterranean basin. Dedicated to the advancement of the study of the literature, history, and culture of the ancient Near East, including the disciplines of the Archaeology of Palestine and Biblical Studies, the Albright continues to be a major research center and to strive for excellence in scholarship.

Now, as in the past, the Albright Institute provides a wide range of programs and facilities for doctoral and post-doctoral research, as well as an information-sharing program and field work experience for more than 2,800 persons. These include an annual series of lectures, reports, seminars, workshops, field trips, social events, and support for 31 ASOR-affiliated and Albright-assisted excavation and publications projects. It also includes a publications program, an extensive research library, workshops, and living accommodations. The Albright Institute jointly sponsors with the Institute of Archaeology of the Hebrew University of Jerusalem the long-term Tel Miqne-Ekron excavation and publications project.

OFFICERS OF THE ALBRIGHT INSTITUTE

Chair: Vivian Bull, Madison, NJ

President: J. Edward Wright, University of Arizona, Tucson, AZ

Vice-President: Joan Branham, Providence College, Providence, RI

Treasurer: J.P. Dessel, University of Tennessee, Knoxville, TN

Secretary: William Schniedewind, University of California, Los Angeles, CA

BOARD OF TRUSTEES

Aaron J. Brody, Bade Museum, Pacific School of Religion, Berkeley, CA

John Camp, Lakeland Shores, MN

Susan Cohen, Montana State University, Bozeman, MT

Sidnie White Crawford, University of Nebraska, Lincoln, NE

Norma Dever, Tucson, AZ

Linda Feinstone, New York, NY

Ernest S. Frerichs, Dorot Foundation, Providence, RI

Eugene Grant, New York, NY

Edward Greenstein, Tel Aviv University, Tel Aviv

Sharon Herbert, University of Michigan, Ann Arbor, MI

Gary Knoppers, Pennsylvania State University, University Park, PA

Theodore Lewis, Johns Hopkins University, Baltimore, MD

Peter Machinist, Harvard University, Cambridge, MA

Jodi Magness, University of North Carolina, Chapel Hill, NC

Carol Meyers, Duke University, Durham, NC

Jonathan P. Rosen, New York, NY

David Rosenstein, Washington, DC

Richard J. Scheuer, Larchmont, NY

Lee R. Seeman, Great Neck, NY

Lydie Shufro, New York, NY

Mark Smith, New York University, New York, NY

John Spencer, John Carroll University, University Heights, OH

Ron Tappy, Pittsburgh Theological Seminary, Pittsburgh, PA

Ray Willey, Ripon, CA

Daniel Wolk, Rye, NY

HONORARY TRUSTEES

Walter E. Aufrecht, University of Lethbridge, Lethbridge, AB, Canada

Robert J. Bull, Drew University, Madison, NJ

Edward F. Campbell, McCormick Theological Seminary, Chicago, IL

William G. Dever, Bedford Hills, NY

David Noel Freedman, University of California-San Diego, La Jolla, CA

Norma Kershaw, Mission Viejo, CA

John H. Marks, Princeton University, Princeton, NJ

George E. Mendenhall, University of Michigan, Ann Arbor, MI

Eric Meyers, Duke University, Durham, NC

Kevin O'Connell, Jesuit Center, Amman, Jordan

Joe D. Seger, Mississippi State University, Starkeville, MS

Lawrence Stager, Harvard University, Cambridge, MA

CONSULTANTS

Library Computer Program: Avner Halpern

Computer Consultants: Yigal Weinstein,

Arthur Spichinetzky, Directors of Antcom

THE ERNEST S. FRERICHS PROGRAM FOR ALBRIGHT FELLOWS



Louise Hitchcock, Annual Professor, 2006/2007

1. Seminars. This program serves as a forum in which Albright Appointees share their research with each other and with colleagues from local institutions on a wide variety of subjects in Ancient Near Eastern Studies.

2. Workshops. In this in-house program, Albright Appointees have the opportunity to share the progress of their research with other Albright Fellows in an informal setting. It is an opportunity to test theories and partial results and contributes to the atmosphere of collegiality at the Institute.

3. Reports. Technical reports on the most recent archaeological discoveries in Israel and in the Palestinian Authority are presented by local scholars for Albright Fellows and members of other foreign and local archaeological institutions in Jerusalem.

4. Trude Dothan Lectureship in Ancient Near Eastern Studies. A senior scholar from abroad working in the discipline of Ancient Near Eastern Archaeology, History, Languages, and Literature is invited every other year to lecture at Al-Quds University, the Hebrew University, and the Albright Institute. This lectureship was endowed at the Albright Institute by the Dorot Foundation to support and encourage the Albright's long-standing program dedicated to advancing the dialogue between students and scholars from the Israeli, Palestinian, and foreign academic communities in Jerusalem.

THE ERNEST S. FRERICHS PROGRAM FOR ALBRIGHT FELLOWS

5. Albright Appointees' Evenings with Guest Scholars. Each month, a guest scholar is invited for a special dinner at the Institute followed by an informal discussion with Albright Appointees. Guests are selected on the basis of the academic interests of the AIAR Fellows. These evenings offer a unique opportunity for informal discussion of the research projects of senior scholars within a wide range of Ancient Near Eastern Studies. They also contribute greatly to the integration of AIAR Fellows into the local academic community.

6. Research Institute Visits. Local research institutes are visited to acquaint AIAR Appointees with the facilities and researchers involved in different aspects of Ancient Near Eastern Studies.

7. Field Trips. More than 80 archaeological sites and museums are visited each year both locally and in the framework of the annual study trips to Crete, Cyprus, Egypt, Greece, Jordan, Lebanon, Syria, or Turkey.



Albright Fellows' trip to Petra, 2007 (l-r): front row: Benjamin Dolinka, Stephen Rosenberg, Jan Dusek; back row: Matthew Suriano, Johannes Pieper, Marion Rosenberg, Tzemah Yoreh, Naomi Koltun-Fromm, Heather Reichstadt

THE ERNEST S. FRERICHS PROGRAM FOR ALBRIGHT FELLOWS

8. Conferences, Symposia, Meetings, and Special Events.

These are programs sponsored by the Albright or other institutions in which AIAR Appointees and other scholars are invited to participate.

9. Internships in Archaeology. Interns from the Rothberg School for Overseas Students, Hebrew University of Jerusalem, are supervised at the Albright by the Director and AIAR Fellows. This provides a practicum for which students can earn four university credits, as well as assistance for research projects conducted at the Albright.

AWARDS GRANTS AND FELLOWSHIPS

In the current academic year, the Albright awarded over \$265,000 in grants, fellowships, and fees. These include awards for an Annual Professor, two National Endowment for the Humanities (NEH), three Andrew W. Mellon Foundation (East-Central European), one Glassman Holland (European), four Educational and Cultural Affairs (ECA) Fellows, an E.S. Frerichs Fellow/Program Coordinator, two Samuel H. Kress Fellows, and a George A. Barton Fellow. Thirteen ECA administrative fee grants were awarded to Albright Associate Fellows. This year, the Albright has 62 Fellows, including 28 with stipends and fee awards from the Institute and 34 Associate Senior, Post-Doctoral, and Research Fellows with funding from other sources, for example, from the Fulbright Program and the Council of American Overseas Research Centers (CAORC).

THE SEAN W. DEVER MEMORIAL PRIZE

This is an annual award of \$650 for the best published article or paper presented at a conference by a Ph.D. candidate in Syro-Palestinian and Biblical Archaeology. Authors may be of any nationality, but the articles/papers must be in English. All submissions should include the academic affiliation of the author and his/her postal and e-mail address and telephone and fax numbers. Submission of conference papers should also include the name of the conference and the date on which the paper was presented. The deadline for submissions is December 31, 2007. Articles/papers should be sent to the W.F. Albright Institute of Archaeological Research, P.O. Box 40151, Philadelphia, PA 19106, USA. The award will be announced on March 1, 2008.

INFORMATION-SHARING PROGRAM

Tel Miqne-Ekron Field Reports and Monographs
Editor, S. Gitin

Published by the W. F. Albright Institute of Archaeological Research
and the Institute of Archaeology, Hebrew University, Jerusalem

Preliminary Reports: Ekron Limited Edition Series (ELES) 1–7

- ELES 1 T. Dothan and S. Gitin, *Tel Miqne (Ekron) Excavation Project, Spring 1981, Field Report, Field INE, Areas 2, 3, 4, 5, 6, 7* (focus on Iron Age I–II) (1981).
- ELES 2 T. Dothan and S. Gitin, *Tel Miqne (Ekron) Excavation Project, Spring 1982, Field Report, Field INE, Areas 2, 3, 4, 5, 6, 7* (focus on Iron Age I–II) (1982).
- ELES 3 B.M. Gittlen, *Tel Miqne-Ekron: Report on the 1984 Excavations, Field IIISE*, with contributions by T. Dothan, S. Gitin, B. Hesse, and P. Wapnish (focus on 7th century BCE) (1985).
- ELES 4 A.E. Killebrew, *Tel Miqne-Ekron: Report of the 1984 Excavations, Field INE/SE*, with contributions by T. Dothan, S. Gitin, B. Hesse, and P. Wapnish (focus on 12th and 11th centuries BCE) (1986).
- ELES 5 D.B. MacKay, *Tel Miqne-Ekron: Report of the 1994 Spring Season Excavations, Field IISW: The Olive Oil Industrial Zone of the Late Iron Age II*, with contributions by S. Gitin and T. Dothan (1995).
- ELES 6 A.E. Killebrew, *Tel Miqne-Ekron: Report of the 1985–1987 Excavations in Field INE: Areas 5, 6, 7—The Bronze and Iron Ages*, with contributions by T. Dothan and S. Gitin (1996).
- ELES 7 N. Bierling, *Tel Miqne-Ekron: Report on the 1995–1996 Excavations in Field XNW: Areas 77, 78, 79, 89, 90, 101, 102—Iron Age I*, with contributions by T. Dothan, S. Gitin, and B. Brandl (1998).

Ekron Final Field Report Series (EFFRS) 8–13

- EFFRS 8 M.W. Meehl, T. Dothan, and S. Gitin, *Tel Miqne-Ekron Excavations, 1995–1996, Field INE East Slope: Iron Age I (Early Philistine Period)*, with contributions by A. Zukerman, D. Ben-Shlomo, J. Lev-Tov, L. Mazow, and A. de Vincenz (2006).
- EFFRS 9 Y. Garfinkel, T. Dothan, and S. Gitin, *Tel Miqne-Ekron Excavations, 1985–1995, Field IVNE/NW (Lower): The Elite Zone, Iron Age I–II*, with contributions by A. Zukerman, L. Mazow, A. de Vincenz, E. Maher, A. Golani, I. Milevski, and J.P. Dessel (in press).
- EFFRS 10 S.M. Ortiz, S. Gitin, and T. Dothan, *Tel Miqne-Ekron Excavations, 1994–1996, Fields IVNE/NW (Upper) and VSE/SW: The Iron Age II Late Philistine Temple Complex 650*, with contributions by A. Golani, E. Beach, I. Milevski, and E. Maher (in press).

INFORMATION-SHARING PROGRAM

- EFFRS 11 A.E. Killebrew, *Tel Miqne-Ekron Excavations, 1985–1988, Fields INE/INW, IISE, VII, and XI: The Iron Age I Philistine Industrial and Cultic Areas and Iron Age II Fortifications*, with contributions by T. Dothan, S. Gitin, and N. Bierling (in preparation).
- EFFRS 12 B.M. Gittlen, T. Dothan, and S. Gitin, *Tel Miqne-Ekron Excavations, 1985–1996, Field IIISE/NE: Iron Age I Monumental Buildings and Iron Age II Olive Oil Industrial Zone*, with contributions by L. Mazow, A. Zukerman, and E. Maher (in preparation).
- EFFRS 13 S. Gitin and T. Dothan, *Tel Miqne-Ekron Excavations, 1990–1996, Field INW/SW: Summit of the Northeast Acropolis, Late Bronze Age–Iron Age II*, with contributions by G. Gilmour, D.B. MacKay, A. Goren, and A. Zukerman (in preparation).

Objects and Material Culture Studies (two volumes)

S. Gitin, ed., *Tel Miqne-Ekron Objects and Material Culture Studies: Middle Bronze Age II–Iron Age II* (in preparation): Altars (S. Gitin), Botanical Remains (M. Kislev), Faunal Data (E. Maher; J. Lev-Tov), Figurines (S. Gitin; E. Beach), Flints (M. Becker; A. Roshwalb Horowitz), Geoarchaeological Survey (A.M. Rosen), Ivories (T. Dothan and D. Ben-Shlomo; S. Gitin, T. Dothan, and D. Ben-Shlomo), Jar Burials (P. Smith), Jewelry (A. Golani), Loomweights (O. Shamir), Metal Objects (B. Rothenberg and M. Notis), Potters' Marks (A. de Vincenz), Scarabs (B. Brandl), Seals (D. Ben-Shlomo), Stone Tools and Vessels (I. Milevski), Reworked Sherds/Stoppers/Lids (G. Arbino), Weights (R. Kletter), Worked Bone/Shell (D. Reese), Zoomorphic Figurines (D. Ben-Shlomo).

Final Synthetic Reports—Qedem Reports Series

(published by the Hebrew University/Albright Institute/Israel Exploration Society)

T. Dothan, *Ekron I: The Bronze Age and the Iron Age I Early Philistine City* (in preparation).

S. Gitin, *Ekron II: The Iron Age II Late Philistine Cities* (in preparation).

INFORMATION-SHARING PROGRAM

Tel Miqne-Ekron Excavations
1995-1996
Field INE East Slope
Iron Age I (Early Philistine Period)

Mark W. Meehl, Trude Dothan,
and
Seymour Gitin



The volume focuses on the initial fortified Philistine city at Ekron at the beginning of the Iron Age I, founded on the destruction debris of the small, unfortified Late Bronze Age II settlement. The new Philistine city represents a sharp break with the past and the imposition of a new urban culture, identified by the introduction of a cultural assemblage associated with the Sea Peoples/Philistines. The Tel Miqne-Ekron excavations and publications are a joint W.F. Albright Institute of Archaeological Research and Hebrew University of Jerusalem project, directed by T. Dothan and S. Gitin. The volume (511 pp.), published by the Albright and Hebrew University, is distributed by the Israel Exploration Society and Eisenbrauns.

Reports on Archaeology in Israel

“The Archaeology of Israel” by Albright Senior Fellows appears periodically as a newsletter in the *American Journal of Archaeology*. It includes reviews of large- and small-scale excavations, salvage work, surveys, research projects, exhibitions, and publications in Israel.

INFORMATION-SHARING PROGRAM

AIAR Fellows' Research and Activities

Reports of Albright Fellows' Projects appear annually in the *American Schools of Oriental Research Newsletter* and in the *Albright News* (the Institute's Newsletter). The annual *Program Brochure* and *Publications of Albright Appointees Based on Research at the Albright Institute (1980-2000)* are available at the Albright in Jerusalem. Albright Fellows also share their research through presentations at local academic institutions and at conferences abroad.

Lecture Program Abroad

The Albright Director lectures annually in North America, Europe, and the Middle East on Albright projects and on new developments in the archaeology of ancient Israel, as well as on his own archaeological research. This includes the annual ASOR Lecture Exchange Program in the Eastern Mediterranean Basin.

The Neo-Assyrian Empire in the 7th Century BC: A Study of the Interactions between Center and Periphery

The project is designed to investigate the growth and development of the Neo-Assyrian Empire, which, in the 7th century BC, stimulated what may be considered the first "world market" in history and the extensive Phoenician colonization in the Mediterranean basin. Among the key issues to be examined are the development of local and regional economic exchange systems, international trade, cultic syncretisms, radical demographic movements, and administrative systems as tools of imperial policy.

This innovative program incorporates archaeological, historical, and environmental evidence from Bahrain, Cyprus, Egypt, Greece, Iran, Iraq, Israel, Jordan, Spain, Syria, Tunisia, and Turkey. Fifty scholars working in these countries, which in antiquity were part of or influenced by the Neo-Assyrian Empire, are participating in the first such international research program. The project, organized by the Albright Director, is under the aegis of the Council of American Overseas Research Centers (CAORC).

ASOR-Affiliated/AIAR-Assisted Excavation, Survey, and Publications Projects (31)—2007

Ashkelon, excavations, Leon Levy Expedition, Harvard University and Semitic Museum, Director L.E. Stager.

Byzantine St. Stephens Project, fieldwork in USA, University of Notre Dame, Directors S. Sheridan, R.D. Haak, and M. Driscoll.

Combined Caesarea Expeditions, publications, Universities of Maryland and Haifa, Directors K.G. Holum and J. Patrich.

Caesarea Maritima Vault Project, publications, University of Maryland, Directors J. Blakely and J. Bennett.

Caesarea Maritima Promontory Palace, publications, University Museum, University of Pennsylvania and Cornell University, Director K.L. Gleason.

Gesher, publications, Montana State University, Director S.L. Cohen.

Gezer, excavations, Phase III, Southwestern Baptist Theological Seminary and Israel Antiquities Authority, Directors S. Ortiz and S. Wolff.

Gezer Field IV, publications, Cobb Institute of Archaeology, Mississippi State University, Director J.D. Seger.

Gezer Gateway Project, publications, University of Toronto, Director J.S. Holladay.

Gezer Object Volume, Phases I and II, Cobb Institute of Archaeology, Mississippi State University, author G. Gilmour, eds. W.G. Dever, J.D. Seger, and S. Gitin.

Tell el-Hesi, publications, Joint Archaeological Expedition, Principal Investigator J. Blakely.

Tell el-Hesi Regional Survey Project, publications, Cobb Institute of Archaeology, Mississippi State University, Director J. Blakely.

Tel Kabri, survey, George Washington University/Tel Aviv University, Directors E. Cline and A. Yasur-Landau.

Tel Kedesh, publications, University of Michigan, Directors S. Herbert and A. Berlin.

Lahav, excavations, Phase III, Emory University, Director O. Borowski.

Lahav, publications, Phases I–II, Cobb Institute of Archaeology, Mississippi State University, Director J.D. Seger.

Lahav, publications, Phase III, Cobb Institute of Archaeology, Mississippi State University, Directors P. Jacobs and O. Borowski.

ASOR-Affiliated/AIAR-Assisted Excavation, Survey, and Publications Projects (31)—2007

Meiron, publications (Nabratein), Duke University, Directors E.M. Meyers and C. Meyers.

Tel Miqne-Ekron, publications, Albright Institute and Hebrew University Institute of Archaeology, Directors S. Gitin and T. Dothan.

The Neo-Assyrian Empire in the 7th Century BC Research Project, publications, Albright Institute and the Council of American Overseas Research Centers, Director S. Gitin.

Qana, excavations, University of Puget Sound, Director D.R. Edwards.

Qana Regional Survey, publications, University of Puget Sound, Director D.R. Edwards.

Sepphoris Acropolis, publications, Duke University and the University of La Verne, Director J.L. Reed.

Sepphoris Ein Zippori, publications, Duke University, Directors E.M. Meyers, C. Meyers, and J.P. Dessel.

Sepphoris Regional Project, publications, Duke University, Directors E.M. Meyers and C. Meyers.

Sepphoris, publications, University of South Florida, Directors J. Strange and T. McCollough.

Tell Taannek, publications, Palestinian Institute of Archaeology, Birzeit University, and American Schools of Oriental Research, Directors H. Salem and N. Lapp.

Tell el-Wawiyat, publications, University of Arizona, Principal Investigator W.G. Dever, Directors J.P. Dessel and B. Alpert Nakhai.

Yotvata, excavations, University of North Carolina at Chapel Hill and Florida International University, Directors J. Magness and G. Davies.

Tell Zaharah, excavations, Montana State University, S.L. Cohen.

Tel Zayit, excavations, Pittsburgh Theological Seminary, Director R. Tappy.

PROGRAM SCHEDULE

2007

- May 22 **Seminar.** Penelope Mountjoy, British School of Archaeology
(Tue) at Athens, “The Assemblages of Mycenaean III C:1 Pottery
from Cyprus.”
- May 24 **Reception** for International Board of St. John’s Eye Hospital,
(Thur) in celebration of the 125th anniversary of its founding
(T. and K. Cox).
- May 30 **Reception** for Visiting US Congressmen, led by Senator
(Wed) Patrick Leahy of Vermont, Chairman of the Senate
Appropriations Committee, accompanied by
Senators Thad Cochran of Mississippi, Chuck Hagel of
Nebraska, Ken Salazar of Colorado, Benjamin Cardin of
Maryland, and Representative Peter Welch of
Vermont, and US Consul-General in Jerusalem Jacob
Walles.
- June 18 **Lecture.** S. Gitin, AIAR Director, “Ekron of the Philistines:
(Mon) From Sea People to Olive Oil Industrialists” (Tel Zayit
excavations educational program).
- June 25 **Lecture.** S. Gitin, AIAR Director, “The Iron Age II at Tel
(Mon) Migne-Ekron (Gezer excavations educational program).
- July 3 **Field Trip.** Ashkelon (D. Master).
(Tue)
- July 7 **Visit to Albright.** Representatives of sponsoring institutions
(Sat) of the Gezer Phase III excavations, led by C.S. Kelley,
President, New Orleans Baptist Theological Seminary, and
C. Blaising, Executive Vice-President and Provost,
Southwestern Baptist Theological Seminary (S. Gitin).



Albright Fellows' trip to Gezer (l-r): front row: Samuel Wolff, Tomasz Polanski, Mary Larkum, Louise Hitchcock, Bronwen Manning; back row: Timothy Mackie, Jan Dusek

PROGRAM SCHEDULE

- July 25 **Lecture.** S. Gitin, AIAR Director, “Ekron of the Philistines:
(Wed) Cultural Conflict and the Struggle to Survive (Tell es-Safi/Gath excavations educational program).
- July 29– **Conference** sponsored by Council of American Overseas
Aug 1 Research Centers: Evaluation of Andrew W. Mellon
(Sun– Fellowship program, attended by 11 directors of European
Wed) and Middle Eastern institutions (S. Gitin, AIAR
representative).
- Sept 6 **Albright Library Orientation** (S. Sussman, A. Halpern);
(Thur) **Appointees’ Orientation and Planning Meeting** (S. Gitin,
B. Dolinka).
- Sept 7 **Library Orientation.** École Biblique (P. Trzopek);
(Fri) **Appointees’ Tour of Albright Facility** (S. Gitin).
- Sept 8 **Summer Reception.** German Protestant Institute of
(Sat) Archaeology (D. Vieweger).
- Sept 9 **Neighborhood Orientation** (B. Dolinka).
(Sun)
- Sept 10 **Institutional Visit.** Rockefeller Museum Library (B. Brandl);
(Mon) Israel Antiquities Authority Archives (A. Rochman-Halperin).
- Sept 18 **Conference.** “British Groundbreakers in the Archaeology
(Tue) of the Holy Land” (Kenyon Institute/CBRL [former British
School of Archaeology in Jerusalem]).
- Sept 19 **Field Trip.** Jerusalem Archaeological Park (H. Geva).
(Wed)
- Sept 26 **Field Trip.** Hazor, Tel Dan (R. Voss).
(Wed)
- Oct 5 **Reception for Albright Appointees** at the Director’s home
(Fri) (C. and S. Gitin).
- Oct 10 **Field Trip.** Ramat Rahel (Y. Gadot).
(Wed)
- Oct 11 **Report.** Tali Erickson-Gini, Southern Negev Regional
(Thur) Inspector, Israel Antiquities Authority: “A Re-Assessment
of Rudolph Cohen’s Excavations at Khirbet Moyat ‘Awad
(Mo’a) in Light of Recent Research.”



W.F. Albright Institute of Archaeological Research Appointees, Residents, and Staff, 2006/2007

Back Row (l-r): Adam Gitin, Cherie Gitin, Senior Fellow Shimon Gibson, Resident Pat Neu, Senior Fellow Stephen Pfann, Educational and Cultural Affairs Fellows Edward Silver and Mary Larkum, Annual Professor Anson Rainey, Senior Fellow Jeffrey Chadwick, Research Fellow Baruch Brandl, Miqne Architect J. Rosenberg, Library Intern Tamara Durbin, Post-Doctoral Fellow Itzhaq Shai, Maintenance Staff Ashraf Hanna.

Middle Row (l-r): Director S. Gitin, Library Computer Consultant Avner Halpern, Research Fellow Deborah Cassuto, Assistant to the Director Helena Flusfeder, Research Fellow Claire Pfann, Andrew W. Mellon Fellow Jan Dusek, National Endowment for the Humanities Fellow Seth Sanders, Samuel H. Kress Fellow Marina Mihaljevic, Djordje Aralica, Miqne Staff Alexandra Drenka, Chief Librarian Sarah Sussman, Chef Hisham M'farrah, Research Fellow Nava Panitz-Cohen, Gardener Faiz Khalaf.

Front Row (l-r): Administrative Consultant Munira Said, Miqne Staff Ghassan Nagagreh, Institute Manager Nadia Bandak, Educational and Cultural Affairs Fellow Karen Britt, Ernest S. Frerichs Fellow/Program Coordinator Benjamin Dolinka, National Endowment for the Humanities Fellow Ann Killebrew, George A. Barton Fellow Matthew Suriano, Annual Professor Louise Hitchcock, Senior Fellow Trude Dothan, Educational and Cultural Affairs Fellow Tzemah Yoreh, Housekeeping Staff Nuha Khalil Ibrahim, Research Fellow Malka Hershkovitz.

Row on Carpet (l-r): Kitchen and Housekeeping Staff Nawal Ibtisam Rshaid, Research Fellow Alexander Zukerman, Library Computerization Staff Diana Steigler, Librarian Kate Masliansky.

Appointees and staff not in photo: Andrew W. Mellon Fellows Mariusz Burdajewicz, Laszlo Hunyadi, Lukás Pecha, Tomasz Polanski; Samuel H. Kress Fellow Christine Thompson; Senior Fellows Marwan Abu Khalaf, Tzvi Abusch, Eliot Braun, Susan Cohen, Gerald Finkielstejn, Naomi Koltun-Fromm, Aren Maeir, Hani Nur el-Din, Joan Schneider, Kent Sparks, Yuri Stoyanov, Hamdan Taha, Dieter Vieweger, Anna de Vincenz, Samuel R. Wolff; Post-Doctoral Fellows Ibrahim Abu-Ammar, Jill Baker, Mohammad Ghosheh, Salah H. Houdalieh, Ianir Milevski, Stephen Rosenberg, Hamed Salem, Aharon Yaffe, Anabel Zarzecki-Peleg; Research Fellows Rodney Aist, Jamal Bargouth, Robert Darby, Amir Golani, Timothy Mackie, Tim Moore, Khader Salameh, Channa Cohen Stuart, Ross Voss; Miqne Staff Marina Zeltser, Moshe Ben-Ari, Viviana Moscovich; Groundsman Lutfi Mussa.

PROGRAM SCHEDULE

- Oct 14 **Visit to Albright** by group from Temple Beth Israel, Longboat Key, Florida, led by M. Eisenstat (S. Gitin).
(Sun)
- Oct 18 **Seminar.** Avraham Faust, Senior Lecturer, Bar-Ilan University: "Pots and People Revisited: Israelites, Philistines, and Canaanites in the Iron Age I."
(Thur)
- Oct 23 **Institutional Visit.** Institute of Archaeology, Hebrew University (Y. Garfinkel).
(Tue)
- Oct 24 **Field Trip.** Arad, Tel Sheva, Aroer (Y. Baumgarten).
(Wed)



Educational and Cultural Affairs Fellows, 2006/2007 (l-r): Edward Silver, Mary Larkum, Karen Britt, Tzemah Yoreh

- Oct 25 **Report.** Amihai Mazar, Professor of Archaeology, Hebrew University of Jerusalem: "Recent Excavations at Tel Rehov."
(Thur)
- Oct 30 **Appointees' Evening with Guest Scholar.** David F. Graf, Professor of History, Miami University (Senior Fellow, AIAR; Lady Davis Fellow, Hebrew University).
(Tue)
- Nov 1 **Visit to Albright** by Archaeological Tours Israel group, led by L. Feinstone (S. Gitin).
(Thur)
- Nov 7 **Field Trip.** Tell es-Safi/Gath (A. Maeir), Gezer (S. Wolff).
(Wed)
- Nov 8 **Lecture.** T. Dothan, Senior Fellow, AIAR: "A Tale of Two Cities: Deir el-Balah and Ekron."
(Thur)
- Nov 11 **Field Trip.** Haram al-Sharif: Dome of the Rock, Al-Aqsa Mosque, Islamic Library (K. Salameh).
(Sun)

PROGRAM SCHEDULE

- Nov 14–17 **Annual Meeting of the American Schools of Oriental Research (ASOR)**, San Diego, CA. Presentations by (Wed–Sat) Albright Appointees: National Endowment for the Humanities Fellow Christine Thompson, “Greek Economic Responses to the Phoenician Diaspora of the Early First Millennium BCE”; Educational and Cultural Affairs Fellow Yorke Rowan, “The Judean Desert as a Chalcolithic Necropolis”; Senior Fellows Beth Alpert-Nakhai, “Where are the Women in Near Eastern Archaeology? An Open Discussion on the Status of Women in the Profession”; Jeffrey R. Chadwick, “Your Daughters...as Cooks and Bakers: Women’s Roles as Reflected in the Organization and Operation of an Eighth Century BCE Elite Kitchen Zone and Bakery at Tell es-Safi/Gath”; and Aren Maeir, “The MB, LB, and Iron Age Levels at Tell es-Safi/Gath: Update for the 2006 and 2007 Seasons”; Post-Doctoral Fellows Ianir Milevski, “The Lower Paleolithic Site of Revadim Quarry, Israel”; Hamed Salem, “Late Bronze Age Pottery Traditions and Craftsmanship at Tell Jenin, Palestine”; and Itzhaq Shai and Research Fellow Alexander Zukerman, “The Royal City of the Philistines in the ‘Azekah Inscription’ and the History of Gath in the Eighth Century BCE.”
- Nov 22 **AIAR Appointees’ Thanksgiving Luncheon.** (Thur)
- Nov 29 **Report.** Eliezer D. Oren, Professor of Archaeology, Ben-Gurion University of the Negev: “Excavations at Tel Sera’.” (Thur)
- Dec 5 **Field Trip.** City of David Excavations (E. Mazar). (Wed)
- Dec 6 **Seminar.** Hava Katz, Chief Curator, Israel Antiquities Authority: “Architectural Terracotta Models.” (Thur)
- Dec 13 **Workshop.** Haskel Greenfield, Annual Professor, AIAR: (Thur) “The Spread of Metallurgy: Cut Mark Analysis on Animal Bones.”
- Dec 16 **Field Trip.** Jerusalem’s ancient water tunnels (R. Reich). (Sun)
- Dec 19 **Field Trip.** Tel Rehov (N. Panitz-Cohen), Beth-Shean (G. Mazar). (Wed)
- Dec 25 **AIAR Appointees’ Holiday Luncheon.** (Tue)

**PROGRAM SCHEDULE
2008**

- Jan 3 **Workshop.** Austin Hill, Educational and Cultural Affairs
(Thur) Fellow, AIAR: “Specialized Pastoralism and Social Stratification: Analysis of the Fauna from Tel Tsaf, Israel.”
- Jan 10 **Workshop.** Teodozja Rzeuska, Andrew W. Mellon Fellow,
(Thur) AIAR: “Levantine Pottery from the Late Old Kingdom Necropolis in West Saqqara and from the Middle Kingdom Settlement on the Elephantine (Egypt).”
- Jan 11 **Tea with J. Edward Wright, President, Albright Institute,**
(Fri) University of Arizona (Tucson).
- Jan 17 **Workshop.** Ivan Biliarsky, Andrew W. Mellon Fellow, AIAR:
(Thur) “The Old Testament in the Building of the State’s Identity in the Slavic-Orthodox and the Ethiopian Tradition.”
- Jan 20 **Institutional Visit.** Bible Lands Museum, Jerusalem
(Sun) (J. Westenholtz).
- Jan 23 **Field Trip.** Jerusalem: Western Wall tunnel, Old City
(Wed) (D. Bahat).



Barbara Porter

- Jan 23 **Appointees’ Evening with Guest Scholar.** Barbara Porter,
(Wed) Director, American Center of Oriental Research, Amman, Jordan.

PROGRAM SCHEDULE

- Jan 24 **ASOR Exchange Lecture** at AIAR. Barbara Porter, Director, American Center of Oriental Research, Amman, Jordan: "ACOR's Petra Church Excavations" (ASOR-Sponsored Program of Exchange Lectures in the Eastern Mediterranean Basin).
(Thur)
- Jan 30 **Field Trip.** Carmel caves (A. Ronen).
(Wed)
- Jan 31 **Workshop.** Christine Thompson, National Endowment for the Humanities Fellow, AIAR: "Silver in the Age of Iron and the Orientalizing Economics of Archaic Greece."
(Thur)
- Feb 5 **Appointees' Evening with Guest Scholar.** Clinton Bailey, Research Fellow, Truman Institute, Hebrew University.
(Tue)
- Feb 7 **Report.** Hani Nur el-Din and Hamdan Taha, Senior Fellows, AIAR: "Recent Excavations at Tell et-Tell."
(Thur)
- Feb 12 **ASOR Exchange Lecture** at ACOR. S. Gitin, Director, AIAR: "Ekron of the Philistines: From Sea Peoples to Olive Oil Industrialists" (ASOR-Sponsored Program of Exchange Lectures in the Eastern Mediterranean Basin).
(Tue)
- Feb 13 **Field Trip.** Achziv, Acco (R. Beeri), Tell Keisan (C. Thompson).
(Wed)
- Feb 14 **Report.** Samuel Wolff, Senior Fellow, AIAR: "Recent Excavations at Tel Gezer."
(Thur)
- Feb 20 **Field Trip.** Ashkelon (R. Voss), Ashdod Museum (B. Dolinka).
(Wed)
- Feb 21 **Workshop.** Isaac Kalimi, National Endowment for the Humanities Fellow, AIAR: "History, Historical Writing, and Evaluation in Chronicles."
(Thur)
- Feb 28 **Workshop.** Erin Kuhns, Educational and Cultural Affairs Fellow, AIAR: "Interpreting Judean Pillar Figurines and Israelite Religion in Light of Archaeological Data, Anthropological Theory, and Gender Analysis."
(Thur)

PROGRAM SCHEDULE



James P. Allen

- Mar 4–6 **Trude Dothan Lectureship in Ancient Near Eastern Studies.** James P. Allen, Wilbour Professor of Egyptology, Brown University, Providence, RI, will give three lectures under the auspices of three institutions: “The Advent of Ancient Egyptian Literature,” Al-Quds University (Tue at the École Biblique, Nablus Road); “The Recently-Discovered Historical Inscription of Khnumhotep at Dahshur,” Hebrew University (Wed on Mt. Scopus); “Tutankhamun’s Father,” Albright Institute (Thur at AIAR).
- Mar 4 **Appointees’ Evening with Guest Scholar.** James P. Allen, Wilbour Professor of Egyptology, Brown University, Providence, RI.
- Mar 9–16 **Field Trip to Cyprus.** Cyprus American Archaeological Research Institute, Cyprus Museum, Idalion, Kition, Pierides Collection, Hala Sultan Tekke, Khirokitia, Kalavassos, Maroni, Kourion, Temple of Apollo, Palaepaphos, Nea Paphos, Maa-Palaeokastro.
- Mar 20 **Workshop.** Andrew Davis, Samuel H. Kress Fellow, AIAR: “The Construction of Sacred Space at Tel Dan in the Iron Age.”
- Mar 23 **Yohanan Aharoni Memorial Day.** Institute of Archaeology, Tel Aviv University.

PROGRAM SCHEDULE

- Mar 26 **Workshop.** Vladimir Doronichev, Glassman Holland (Wed) Research Fellow, AIAR: “A Comparative Analysis of the Lower Paleolithic Assemblages in the Caucasus and the Levant.”
- Mar 27 **Field Trip.** Qumran (H. Eshel). (Thur)
- April 3 **Workshop.** Linda Meiberg, Samuel H. Kress Fellow, AIAR: (Thur) “Figural Motifs on Philistine Pottery and Their Connections to the Aegean World.”
- April 8 **Appointees’ Evening with Guest Scholar.** Pierre de (Tue) Miroshedji, Director, Centre de Recherche Française de Jérusalem.



Appointees’ Evening with Guest Scholar, 2007 (l–r): Shari Saunders, Kathleen Scott, Gerry D. Scott III, Director, American Research Center in Egypt, S. Gitin, D. Ben-Tor, T. Dothan, A. Ben-Tor

- April 10 **Irene Levi-Sala Annual Seminar,** Ben-Gurion University (Thur) of the Negev. Guest Lecturer, Zbigniew E. Szafranski, Warsaw University: “Queen Hatshepsut and the Deir el-Bahri Temple.”
- April 16 **Field Trip.** Beit Guvrin (M. Cohen), Maresha (G. Finkielsztein).
- April 17 **Workshop.** Robert Darby, Educational and Cultural Affairs (Thur) Fellow, AIAR: “Bathing on the Edge of Empire: An Architectural and Social Study of Tetrarchic Military Baths in Judea, Palaestina, and Arabia.”

PROGRAM SCHEDULE

- April 29 **Workshop.** Yorke Rowan, Educational and Cultural Affairs Fellow, AIAR: “Crossing the Nile and Tracing Chalcolithic Interaction Spheres and Communication.”
(Tue)
- April 30 **Field Trip.** Lachish, Beth-Shemesh (G. Barkay).
(Wed)
- May 4 **Field Trip.** Caesarea (P. Gendelman), Tel Dor (B. Manning), Hecht Museum (S. Marmelstein).
(Sun)
- May 14 **Field Trip.** Megiddo (N. Franklin), Sepphoris (R. Evyassaf).
(Wed)
- May 15 **Appointees’ Group Photo.**
(Thur)
- May 15 **Workshop.** Rodney Aist, George A. Barton Fellow, AIAR: “Willibald of Eichstätt (d. 787 C.E.) and the Christian Topography of Early Islamic Jerusalem.”
(Thur)
- May 20 **Workshop.** Arkadiusz Marciniak, Andrew W. Mellon Fellow, AIAR: “Social and Economic Transformations at the End of the Pre-Pottery and Beginning of the Pottery Neolithic in the Southern Levant.”
(Tue)
- May 23 **Appointees’ Annual Spring “Schwarmafest”.**
(Fri)
- May 26 **Visit to Albright.** Hebrew University students (S. Gitin).
(Mon)



Albright “Schwarmafest” 2007 (l–r around the table): Alexandra Drenka, Seth Sanders, Karen Britt, Matthew Suriano, Jan Dusek, Norma Franklin, Louise Hitchcock, Ilan Sharon, Ann Killebrew, Edward Silver

PROGRAM



Andrew W. Mellon Fellows, 2006/2007 (l-r): Mariusz Burdajewicz, Laszlo Hunyadi, Tomasz Polanski, Lukás Pecha



AIAR Trustee Jodi Magness, co-director of the Yotvata excavations, in the fifth and final season of excavations (2007)

RESEARCH PROJECTS OF ALBRIGHT APPOINTEES, 2007/2008

The Art and Architecture of the Hamra Palace in Andalusian Granada (Ibrahim Abu-Ammar)

Islamic Jerusalem (Marwan Abu Khalaf)

Images of Jerusalem: The Religious Imagination of Willibald of Eichstätt (8th Century C.E.) (Rodney Aist)

The Contributions of the Orientalism Movement in the Agenda of Archaeological Research in Palestine (1800–1948) (Jamal Bargouth)

The Old Testament in the Building of the State's Identity in the Slavic-Orthodox and the Ethiopian Traditions (Ivan Biliarsky)

An Analysis of Egyptian Artifacts from Tel Miqne-Ekron (Baruch Brandl)

Researching Early Levels at Megiddo (Eliot Braun)

Words in the Dirt: Excavated Texts from the Ancient Near East (Scott Bucking)

The Textile Industry in the Iron Age Levant: A Contextual Approach (Deborah Cassuto)

Assyrian and Judean Influences at Gath of the Philistines (Tell es-Safi) during the Iron Age IIB (Jeffrey Chadwick)

Bathing on the Edge of Empire: An Architectural and Social Study of Tetrarchic Military Baths in Judea, Palaestina, and Arabia (Robert Darby)

The Construction of Sacred Space at Tel Dan in the Iron Age (Andrew Radford Davis)

Final Report on the Excavations at Horvat Dafit (Benjamin Dolinka)

A Comparative Analysis of the Lower Paleolithic Assemblages in the Caucasus and the Levant (Vladimir Doronichev)

The Philistine Ceramic Corpus of the Iron Age I at Tel Miqne-Ekron (Trude Dothan)

Amphora Stamps as Evidence for the History of Hellenistic Samaria and the Southern Levant (Gerald Finkielsztejn)

The Social Life of Jerusalem in the Early and Middle Ottoman Period (Mohammad Ghosheh)

RESEARCH PROJECTS OF ALBRIGHT APPOINTEES, 2007/2008

The Mount Zion Excavation Project in Jerusalem (Shimon Gibson)

Gezer VI: The Objects from Phases I and II; Final Report of the Palestine Exploration Fund Excavations in the City of David, Jerusalem, from 1923 to 1925 (Garth Gilmour)

The Iron Age IIA–B Ceramic Corpus at Tel Miqne-Ekron: A Case Study for Philistia (S. Gitin)

The Development, Significance, and Function of Jewelry and the Jeweler's Craft in the Land of Israel during the Iron Age II (Amir Golani)

Nabatean Settlements in the Negev and the Petra–Gaza Incense Route (David Graf)

The Spread of Metallurgy: Cut Mark Analysis on Animal Bones (Haskel J. Greenfield)

The Zooarchaeology of Ancient Tushhan—The Neo-Assyrian Provincial Capital in Southeast Turkey (Tina Greenfield)

A Corpus of Hellenistic–Roman Glyptics in Eretz-Israel (Malka Herskovitz)

Specialized Pastoralism and Social Stratification: Analysis of the Fauna from Tel Tsaf, Israel (Austin Hill)

The Development of Early Bronze Age Material Culture (Salah Houdalieh)

Historical Commentary on the Second Book of Chronicles (Isaac Kalimi)

Interpreting Judean Pillar Figurines and Israelite Religion in Light of Archaeological Data, Anthropological Theory, and Gender Analysis (Erin Kuhns)

The Development and Transformation of Philistine Culture: The View from the Iron IIA (Aren Maeir)

Roots of Monotheism: The Late Iron Age and the Persian Period—A Material Culture Comparison (Bronwen Manning)

Social and Economic Transformations at the End of the Pre-Pottery and the Beginning of the Pottery Neolithic in the Southern Levant (Arkadiusz Marciniak)

RESEARCH PROJECTS OF ALBRIGHT APPOINTEES, 2007/2008

Jewish Methods of Conflict Resolution Based on Biblical, Rabbinic, and Other Traditional Jewish Sources (Chloe Massey)

Figural Motifs on Philistine Pottery and Their Connections to the Aegean World (Linda G. Meiberg)

The Exchange of Goods in the Early Bronze Age of the Southern Levant (Ianir Milevski)

Tell el-Wawiyat Excavation Project (Beth Alpert Nakhai)

Symbolism and Cult Practice—Fact and Fiction: A Comparative Study of Ancient Near Eastern Phenomena (Hani Nur el-Din)

Iron Age I Stratigraphy and Pottery from Tel Beth-Shean (Nava Panitz-Cohen)

The Testament of Abraham (Claire Pfann)

An Anthropological Study of the Site of Qumran and Its Texts (Stephen Pfann)

The Iron Age Terracottas of Ashkelon and Philistia (Michael Press)

Imaging Female Rulers in Syria-Palestine and Arabia (4th Century BCE–3rd Century BCE) (Stephanie Pryor)

Architecture and Archaeology of the Tobiad Estate at Airaq al-Amir in Jordan (Stephen Rosenberg)

Crossing the Nile—Tracing Chalcolithic Interaction Spheres and Communication (Yorke Rowan)

Levantine Pottery from the Late Old Kingdom Necropolis in West Saqqara and from the Middle Kingdom Settlement on the Elephantine (Egypt) (Teodozja Izabela Rzeuska)

The Inscriptions from the Islamic Museum, al-Haram al-Sharif: From the Roman to the Ottoman Period (Khader Salameh)

Dynamic Stability and Change in the Palestinian Cultural Landscape: The Birzeit Region as a Case Study (Hamed Salem)

Philistine Cultic Forms of the Iron Age I (Daniel Santimore)

Paleodiet and Bio-Cultural Practices of the Neolithic Ain Ghazal Inhabitants of Jordan (Issa Sarie)

RESEARCH PROJECTS OF ALBRIGHT APPOINTEES, 2007/2008

Rethinking the *Yahad*: A Comprehensive Examination of the Cave 4 Versions of *Serekh ha-Yahad* (Alison Schofield)

Re-Imaging Mamluk Coins (Warren Schultz)

Embracing Script and Language as Criteria to Globalization (Itzhaq Shai)

The Evolution and Interrelationship between Christian and Islamic Heterodox and Mystical Traditions in the East Mediterranean in the Late Byzantine and Ottoman Periods (Yuri Stoyanov)

Jewish Culture of Roman North Africa (Karen Stern)

The Excavation of Tawaheen es-Sukker, Jericho (Hamdan Taha)

Silver in the Age of Iron and the Orientalizing Economies of Archaic Greece (Christine Thompson)

The Chronology of the Tamassos-Lambertis Necropolis (Dieter Vieweger)

Ceramic and Small Finds from the Excavations at Ramle (Anna de Vincenz)

The Middle Bronze Age Gates at Ashkelon (Ross Voss)

Poetic Parallelism in Job's First Speech Cycle (John Walton)

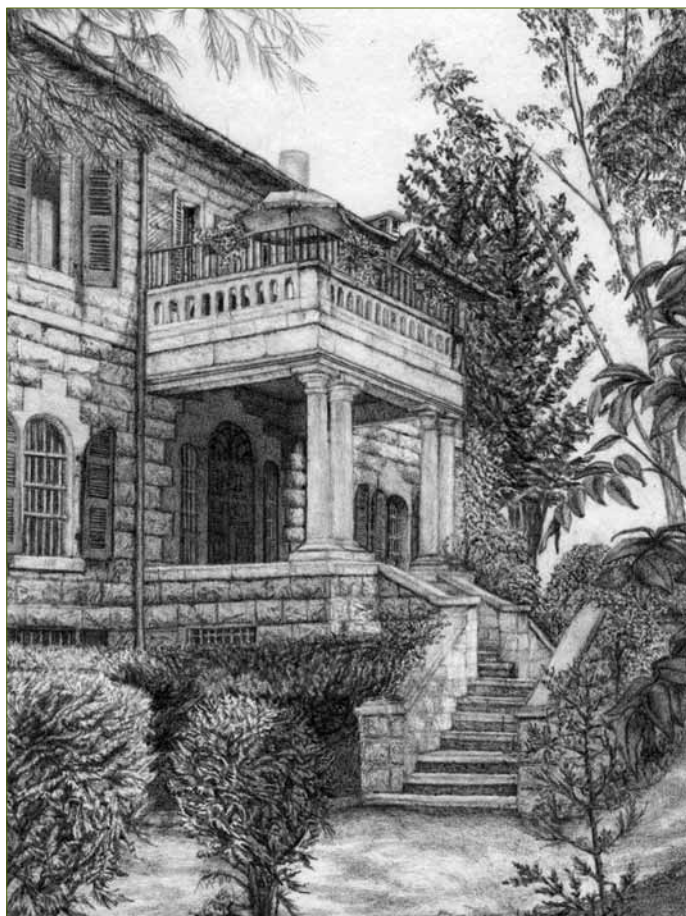
The Renewed Excavations at Tel Gezer (Samuel Wolff)

Ancient Spiritualities Reflected in the Emergence of Scripture during the Second Temple Period (William Yarchin)

The Iron Age I Ceramic Corpus from Fields III and IV at Tel Miqne-Ekron (Alexander Zukerman)



Rendition of the entrance to the Albright Institute by Linda Lundborn



Rendition of the entrance to the Director's House at the Albright Institute
by Linda Lundbom

Associate Fellows

Senior Fellows

Marwan Abu Khalaf, Al-Quds University
Eliot Braun, Independent Researcher
Scott Bucking, DePaul University (Fulbright Fellow)
Jeffrey Chadwick, Brigham Young University Jerusalem Center
Trude Dothan, Hebrew University of Jerusalem (Emerita)
Gerald Finkielsztein, Israel Antiquities Authority
Shimon Gibson, University of North Carolina-Charlotte
Garth Gilmour, Oxford University
David Graf, University of Miami (Lady Davis Fellow, Hebrew University)
Aren Maeir, Bar-Ilan University
Beth Alpert Nakhai, University of Arizona
Hani Nur el-Din, Al-Quds University
Stephen Pfann, University of the Holy Land
Warren Schultz, DePaul University (CAORC Fellow)
Yuri Stoyanov, Kenyon Institute, Jerusalem
Hamdan Taha, Palestinian Department of Antiquities
Dieter Vieweger, German Protestant Institute of Archaeology
Anna de Vincenz, Independent Researcher (Miqne Fellow)
Samuel R. Wolff, Israel Antiquities Authority
William Yarchin, Azusa Pacific University

Post-Doctoral Fellows

Ibrahim Abu-Ammar, Al-Quds University
Mohammad Ghosheh, Al-Quds University
Salah H. Houdalieh, Al-Quds University
Ianir Milevski, Israel Antiquities Authority
Nava Panitz-Cohen, Hebrew University of Jerusalem
Michael Press, Ashkelon Excavation Project
Stephen Rosenberg, Independent Researcher
Hamed J. Salem, Birzeit University
Alison Schofield, University of Denver
Itzhaq Shai, Bar-Ilan University
Karen Stern, University of Southern California (CAORC Fellow)

Research Fellows

Jamal Bargouth, Palestinian Institution for Cultural
Landscape Studies (al-Mashhad)
Baruch Brandl, Israel Antiquities Authority
Deborah Cassuto, Bar-Ilan University
Amir Golani, Israel Antiquities Authority
Tina Greenfield, Independent Scholar
Malka Hershkovitz, Nelson Glueck School of Biblical Archaeology
Bronwen Manning, Hebrew University of Jerusalem
Chloe Massey, Kenyon Institute
Claire Pfann, University of the Holy Land
Stephanie Pryor, University of Missouri-Columbia
Khader Salameh, Islamic Museum, al-Haram al-Sharif, Jerusalem
Daniel Santimore, Gordon College, MA (Fulbright Fellow)
Issa Sarie, Hebrew University of Jerusalem
Ross Voss, Ashkelon Excavation Project
John Walton Burnight, University of Chicago (Fulbright Fellow)
Alexander Zukerman, Hebrew University of Jerusalem

ALBRIGHT STAFF AND APPOINTEES

Dorot Director and Professor of Archaeology S. Gitin

STAFF

Assistant to the Director	Helena Flusfeder
Institute Manager	Nadia Bandak
Administrative Consultant	Munira Said
Chief Librarian	Sarah Sussman
Librarian	Kate Masliansky
Library Computerization Staff	Avner Halpern, Diana Steigler

Appointees 2007/2008

Annual Professor

Haskel J. Greenfield, University of Manitoba, Winnipeg

National Endowment for the Humanities Fellows

Isaac Kalimi, Northwestern University

Christine Thompson, University of California at Los Angeles

Ernest S. Frerichs Fellow/Program Coordinator

Benjamin Dolinka, Independent Researcher

George A. Barton Fellow

Rodney Aist, University of Wales at Lampeter

Samuel H. Kress Fellows

Andrew Radford Davis, Johns Hopkins University

Linda G. Meiberg, University of Pennsylvania

Educational and Cultural Affairs Fellows

Robert Darby, University of Missouri-Columbia

Austin C. Hill, University of Connecticut

Erin Kuhns, Duke University

Yorke Rowan, Independent Researcher

Andrew W. Mellon Fellows

Ivan Biliarsky, Bulgarian Academy of Sciences, Sofia

Arkadiusz Marciniak, University of Poznan

Teodozja Izabela Rzeuska, Polish Academy of Sciences, Warsaw

Glassman Holland Research Fellow

Vladimir Doronichev, ANO Laboratory of Prehistory, St. Petersburg