

W.F. Albright Institute of Archaeological Research

26 Salah ed-Din Street, P.O.Box 19096, 91190 Jerusalem, Israel • Tel. 6282131 • Fax 6264424 • E-mail: manager@albright.org.il

Program 2006/2007





Reading room of the Albright Library
1984

MORE THAN A CENTURY OF SERVICE TO AMERICAN SCHOLARSHIP

The W.F. Albright Institute of Archaeological Research in Jerusalem is the oldest American research center for Ancient Near Eastern Studies in the Middle East. Founded in 1900 as the American School of Oriental Research (ASOR), it was renamed in 1970 after its most distinguished director, William Foxwell Albright. Today, the Albright is one of three separately incorporated institutes affiliated with ASOR, the others being in Amman and Nicosia. The present Albright facility was constructed in 1925, with additions made in 1930 and major renovations completed in 1985 and 2003. Located 500 meters north of the old walled city of Jerusalem, it is within easy walking distance of the École Biblique, the British, German, and Spanish Schools of Archaeology, the Hebrew Union College-Nelson Glueck School of Biblical Archaeology, the Hebrew University, the Rockefeller Museum, and the Israel Antiquities Authority. This grouping of scholarly facilities represents one of the heaviest concentrations of human, bibliographic, and artifact resources in Ancient Near Eastern Studies.

For the past 107 years, Albright/ASOR has provided students and scholars with an unparalleled international cultural environment and a unique program that spans the broad spectrum of Near Eastern Studies from prehistory to the early Islamic Period. Each year, Albright Fellows, primarily from the United States, Canada, Europe, Israel, and the Palestinian Entity, exchange information and ideas with hundreds of other local and foreign researchers, including those from other countries in the eastern Mediterranean basin. Dedicated to the advancement of the study of the literature, history, and culture of the ancient Near East, including the disciplines of the Archaeology of Palestine and Biblical Studies, the Albright continues to be a major research center and to strive for excellence in scholarship.

Now, as in the past, the Albright Institute provides a wide range of programs and facilities for doctoral and post-doctoral research, as well as an information-sharing program and field work experience for more than 2,800 persons. These include an annual series of lectures, reports, seminars, workshops, field trips, social events, and support for 29 ASOR-affiliated and Albright-assisted excavation and publications projects. It also includes a publications program, an extensive research library, workshops, and living accommodations. The Albright Institute jointly sponsors with the Institute of Archaeology of the Hebrew University of Jerusalem the long-term Tel Miqne-Ekron excavation and publications project.

OFFICERS OF THE ALBRIGHT INSTITUTE

Chair: Vivian Bull, Madison, NJ

President: J. Edward Wright, University of Arizona, Tucson, AZ

Vice-President: Joan Branham, Providence College, Providence, RI

Treasurer: J.P. Dessel, University of Tennessee, Knoxville, TN

Secretary: William Schniedewind, University of California, Los Angeles, CA

BOARD OF TRUSTEES

Aaron J. Brody, Bade Museum, Pacific School of Religion, Berkeley, CA

John Camp, Lakeland Shores, MN

Susan Cohen, Montana State University, Bozeman, MT

Sidnie White Crawford, University of Nebraska, Lincoln, NE

Norma Dever, Tucson, AZ

Linda Feinstone, New York, NY

Raymond Frankel, Los Angeles, CA

Ernest S. Frerichs, Dorot Foundation, Providence, RI

Patty Gerstenblith, DePaul University College of Law, Chicago, IL

Eugene Grant, New York, NY

Edward Greenstein, Tel Aviv University, Tel Aviv

Sharon Herbert, University of Michigan, Ann Arbor, MI

Gary Knoppers, Pennsylvania State University, University Park, PA

Theodore Lewis, Johns Hopkins University, Baltimore, MD

Peter Machinist, Harvard University, Cambridge, MA

Jodi Magness, University of North Carolina, Chapel Hill, NC

Carol Meyers, Duke University, Durham, NC

Jonathan P. Rosen, New York, NY

Richard J. Scheuer, Larchmont, NY

Lee R. Seeman, Great Neck, NY

Lydie Shufro, New York, NY

Mark Smith, New York University, New York, NY

John Spencer, John Carroll University, University Heights, OH

Ron Tappy, Pittsburgh Theological Seminary, Pittsburgh, PA

Daniel Wolk, Rye, NY

HONORARY TRUSTEES

Walter E. Aufrecht, University of Lethbridge, Lethbridge, AB, Canada

Robert J. Bull, Drew University, Madison, NJ

Edward F. Campbell, McCormick Theological Seminary, Chicago, IL

William G. Dever, Bedford Hills, NY

David Noel Freedman, University of California-San Diego, La Jolla, CA

Norma Kershaw, Mission Viejo, CA

John H. Marks, Princeton University, Princeton, NJ

George E. Mendenhall, University of Michigan, Ann Arbor, MI

Eric Meyers, Duke University, Durham, NC

Kevin O'Connell, Jesuit Center, Amman, Jordan

Joe D. Seger, Mississippi State University, Starkeville, MS

Lawrence Stager, Harvard University, Cambridge, MA

CONSULTANTS

Library Computer Program: Avner Halpern

Computer Consultants: Yigal Weinstein, Arthur Spichinetzky, Directors of Antcom

THE ERNEST S. FRERICHS PROGRAM FOR ALBRIGHT FELLOWS



Christine Thompson, Samuel H. Kress Fellow, 2005-2007

1. Seminars. This program serves as a forum in which Albright appointees share their research with each other and with colleagues from local institutions on a wide variety of subjects in Ancient Near Eastern Studies.

2. Workshops. In this in-house program, Albright appointees have the opportunity to share the progress of their research with other Albright Fellows in an informal setting. It is an opportunity to test theories and partial results and contributes to the atmosphere of collegiality at the Institute.

3. Reports. Technical reports on the most recent archaeological discoveries in Israel and in the Palestinian Entity are presented by local scholars for Albright Fellows and members of other foreign and local archaeological institutions in Jerusalem.

4. Trude Dothan Lectureship in Ancient Near Eastern Studies. A senior scholar from abroad working in the discipline of Ancient Near Eastern Archaeology, History, Languages, and Literature is invited every other year to lecture at Al-Quds University, the Hebrew University, and the Albright Institute. This lectureship was endowed at the Albright Institute by the Dorot Foundation to support and encourage the Albright's long-standing program dedicated to advancing the dialogue between students and scholars from the Israeli, Palestinian, and foreign academic communities in Jerusalem.

THE ERNEST S. FRERICHS PROGRAM FOR ALBRIGHT FELLOWS

5. Albright Appointees' Evenings with Guest Scholars. Each month, a guest scholar is invited for a special dinner at the Institute followed by an informal discussion with Albright Appointees. Guests are selected on the basis of the academic interests of the AIAR Fellows. These evenings offer a unique opportunity for informal discussion of the research projects of senior scholars within a wide range of Ancient Near Eastern Studies. They also contribute greatly to the integration of AIAR Fellows into the local academic community.

6. Research Institute Visits. Local research institutes are visited to acquaint AIAR Appointees with the facilities and researchers involved in different aspects of Ancient Near Eastern Studies.

7. Field Trips. More than 90 local archaeological sites and museums are visited each year and triennial study trips are organized to Crete, Cyprus, Egypt, Greece, Jordan, Lebanon, Syria, or Turkey.



Albright Fellows' Trip to Avdat (l-r): Rodney Aist, Elaine Myers, Marcia and Oded Borowski, Christine Thompson, Jill Baker and Iskra Vladimirova Hristova-Shomova

THE ERNEST S. FRERICHS PROGRAM FOR ALBRIGHT FELLOWS

8. Conferences, Symposia, Meetings, and Special Events.

These are programs sponsored by the Albright or other institutions in which AIAR appointees and other scholars are invited to participate.

9. Internships in Archaeology. Interns from the Rothberg School for Overseas Students, Hebrew University of Jerusalem, are supervised at the Albright by the Director and AIAR Fellows. This provides a practicum for which students can earn four university credits, as well as assistance for research projects conducted at the Albright.

AWARDS GRANTS AND FELLOWSHIPS

In the current academic year, the Albright awarded over \$265,000 in grants, fellowships, and fees. These include awards for two Annual Professors, two National Endowment for the Humanities (NEH), five Andrew W. Mellon Foundation (East-Central European), three Educational and Cultural Affairs (ECA) Fellows, an E.S. Frerichs Fellow/Program Coordinator, two Samuel H. Kress Fellows, and a George A. Barton Fellow. Thirteen ECA administrative fee grants were awarded to Albright Associate Fellows. This year, the Albright has 59 Fellows, including 29 with stipends and fee awards from the Institute and 30 Associate Senior, Post-Doctoral, and Research Fellows with funding from other sources.

THE SEAN W. DEVER MEMORIAL PRIZE

This is an annual award of \$500 for the best published article or paper presented at a conference by a Ph.D. candidate in Syro-Palestinian and Biblical Archaeology. Authors may be of any nationality, but the articles/papers must be in English. All submissions should include the academic affiliation of the author and his/her postal and e-mail address and telephone and fax numbers. Submission of conference papers should also include the name of the conference and the date on which the paper was presented. The deadline for submissions is December 31, 2006. Articles/papers should be sent to the W.F. Albright Institute of Archaeological Research, P.O. Box 40151, Philadelphia, PA 19106, USA. The award will be announced on March 1, 2007.

INFORMATION-SHARING PROGRAM

Tel Miqne-Ekron Field Reports and Monographs
Editor, S. Gitin

Published by the W. F. Albright Institute of Archaeological Research
and the Institute of Archaeology, Hebrew University, Jerusalem

Preliminary Reports Ekron Limited Edition Series (ELES) 1-7

- ELES 1 T. Dothan and S. Gitin, Tel Miqne (Ekron) Excavation Project, Spring 1981, Field Report, Field INE, Areas 2, 3, 4, 5, 6, 7 (focus on Iron Age I-II) (1981).
- ELES 2 T. Dothan and S. Gitin, Tel Miqne (Ekron) Excavation Project, Spring 1982, Field Report, Field INE, Areas 2, 3, 4, 5, 6, 7 (focus on Iron Age I-II) (1982).
- ELES 3 B.M. Gittlen, Tel Miqne-Ekron: Report on the 1984 Excavations, Field IIISE, with contributions by T. Dothan, S. Gitin, B. Hesse, and P. Wapnish (focus on 7th century BCE) (1985).
- ELES 4 A.E. Killebrew, Tel Miqne-Ekron: Report on the 1984 Excavations, Field INE/SE, with contributions by T. Dothan, S. Gitin, B. Hesse, and P. Wapnish (focus on 12th and 11th centuries BCE) (1986).
- ELES 5 D.B. MacKay, Tel Miqne-Ekron: Report on the 1994 Spring Season Excavations IISW: The Olive Oil Industrial Zone of the Late Iron Age II, with contributions by S. Gitin and T. Dothan (1995).
- ELES 6 A.E. Killebrew, Tel Miqne-Ekron: Report on the 1985-1987 Excavations in Field INE: Areas 5, 6, 7—The Bronze and Iron Ages, with contributions by T. Dothan and S. Gitin (1996).
- ELES 7 N. Bierling, Tel Miqne-Ekron: Report on the 1995-1996 Excavations in Field XNW: Areas 77, 78, 79, 89, 90, 101, 102—Iron Age I, with contributions by T. Dothan, S. Gitin, and B. Brandl (1998).

Ekron Final Field Report Series (EFFRS) 8-13

- EFFRS 8 M.W. Meehl, T. Dothan, and S. Gitin, Tel Miqne-Ekron Excavations, 1995-1996, Field INE East Slope: Iron Age I (Early Philistine Period), with contributions by A. Zukerman, D. Ben-Shlomo, J. Lev-Tov, L. Mazow, and A. de Vincenz (2006).
- EFFRS 9 S.M. Ortiz, S. Gitin, and T. Dothan, Tel Miqne-Ekron Excavations, 1994-1996, Fields IVNE/NW (Upper) and VSE/SW: The Iron Age II Late Philistine Temple Complex 650, with contributions by A. Golani, E. Beach, I. Milevski, E. Maher, O. Lernau, and D. Reese (in press).
- EFFRS 10 A.E. Killebrew, Tel Miqne-Ekron Excavations, 1985-1988, Fields INE/INW, IIISE, VII, and XI: The Iron Age I Philistine Industrial and Cultic Areas and Iron Age II Fortifications, with contributions by T. Dothan, S. Gitin, and N. Bierling (in preparation).

INFORMATION-SHARING PROGRAM

Tel Miqne-Ekron Field Reports and Monographs

- EFFRS 11 Y. Garfinkel, T. Dothan, and S. Gitin, Tel Miqne-Ekron Excavations, 1985-1995, Field IVNE/NW (Lower): The Elite Zone, Iron Age I-II, with contributions by A. Zukerman, L. Mazow, A. de Vincenz, E. Maher, A. Golani, I. Milevski, O. Lernau, D. Reese, and J.P. Dessel (in press).
- EFFRS 12 S. Gitin and T. Dothan, Tel Miqne-Ekron Excavations, 1990-1996, Field: INW/SW Summit of the Northeast Acropolis, Late Bronze Age-Iron Age II, with contributions by G. Gilmour, D.B. MacKay, A. Goren, and A. Zukerman (in preparation).
- EFFRS 13 B.M. Gittlen, T. Dothan, and S. Gitin, Tel Miqne-Ekron Excavations, 1985-1996, Field IIISE/NE: Iron Age I Monumental Buildings and Iron Age II Olive Oil Industrial Zone, with contributions by L. Mazow, A. Zukerman, and E. Maher (in preparation).

Objects and Material Culture Studies (two volumes)

S. Gitin, ed., Tel Miqne-Ekron Objects and Material Culture Studies: Middle Bronze Age II-Iron Age II (in preparation): Altars (S. Gitin), Botanical Remains (M. Kislev), Faunal Data (E. Maher; J. Lev-Tov), Figurines (S. Gitin; E. Beach), Flints (M. Becker; A. Roshwalb Horowitz), Geoarchaeological Survey (A.M. Rosen), Ivories (T. Dothan and D. Ben-Shlomo; S. Gitin, T. Dothan, and D. Ben-Shlomo), Jar Burials (P. Smith), Jewelry (A. Golani), Loomweights (O. Shamir), Metal Objects (B. Rothenberg and M. Notis), Potters' Marks (A. de Vincenz), Scarabs (B. Brandl), Seals (D. Ben-Shlomo), Stone Tools and Vessels (I. Milevski), Reworked Sherds/Stoppers/Lids (G. Arbino), Weights (R. Kletter), Worked Bone/Shell (D. Reese), Zoomorphic Figurines (D. Ben-Shlomo).

Final Synthetic Reports–Qedem Reports Series (published by the Hebrew University/Albright Institute/Israel Exploration Society)

T. Dothan, Ekron I: The Bronze Age and the Iron Age I Early Philistine City (in preparation); S. Gitin, Ekron II: The Iron Age II Late Philistine Cities (in preparation).

INFORMATION-SHARING PROGRAM

Reports on Archaeology in Israel

“The Archaeology of Israel” by an Albright Senior Fellow appears periodically as a newsletter in the American Journal of Archaeology. It includes reviews of large- and small-scale excavations, salvage work, surveys, research projects, new exhibits, and publications in Israel.

AIAR Fellows’ Research and Activities

Reports of Albright Fellows’ Projects appear annually in the American Schools of Oriental Research Newsletter and in the Albright News (the Institute’s Newsletter). The annual Program Brochure and Publications of Albright Appointees Based on Research at the Albright Institute (1980-2000) are available at the Albright in Jerusalem. Albright Fellows also share their research through presentations at local academic institutions and at conferences abroad.

Lecture Program Abroad

The Albright Director lectures annually in North America, Europe, and the Middle East on Albright projects and on new developments in the archaeology of ancient Israel, as well as on his own archaeological research.



From the Archives: ASOR Class of 1936 (Albright Garden) (l-r): (Back row): Rabbi R. Wolk, guest, Mrs. R. Wolk, Katherine Wamboldt, W and E. Graham (AP), guest, (front row): Sir Flinders Petrie, Nelson Glueck and two guests.

The Neo-Assyrian Empire in the 7th Century BC: A Study of the Interactions between Center and Periphery



Tel Miqne-Ekron, Cache of Hacksilber, Stratum IB, 7th Century BCE

The project is designed to investigate the growth and development of the Neo-Assyrian Empire, which, in the 7th century BC, stimulated what may be considered the first “world market” in history, and the extensive Phoenician colonization in the Mediterranean basin. Among the key issues to be examined are the development of local and regional economic exchange systems, international trade, cultic syncretisms, radical demographic movements, and administrative systems as tools of imperial policy.

This innovative program incorporates archaeological, historical, and environmental evidence from Bahrain, Cyprus, Egypt, Greece, Iran, Iraq, Israel, Jordan, Spain, Syria, Tunisia, and Turkey. Fifty scholars working in these countries, which in antiquity were part of or influenced by the Neo-Assyrian Empire, are participating in the first such international research program. The project, organized by the Albright Director, is under the aegis of the Council of American Overseas Research Centers (CAORC).

ASOR-Affiliated/AIAR-Assisted Excavation, Survey, and Publications Projects (29)–2006

Ashkelon, publications, Leon Levy Expedition, Harvard University and Semitic Museum, Director L.E. Stager.

Byzantine St. Stephens Project, fieldwork in USA, University of Notre Dame, Directors S. Sheridan, R.D. Haak, and M. Driscoll.

Combined Caesarea Expeditions, publications, Universities of Maryland and Haifa, Directors K.G. Holum, A. Raban, and J. Patrich.

Caesarea Maritima Vault Project, publications, University of Maryland, Directors J. Blakely and J. Bennett.

Caesarea Maritima Promontory Palace, publications, University Museum, University of Pennsylvania and Cornell University, Director K.L. Gleason.

Gesher, publications, Montana State University, Director S.L. Cohen.

The Gezer Gateway Project, publications, University of Toronto, Director J.S. Holladay Jr.

Gezer Field IV, publications, Cobb Institute of Archaeology, Mississippi State University, Directors J.D. Seger and J. Hardin.

Gezer Object Volume, Phases I and II, Cobb Institute of Archaeology, Mississippi State University, author G. Gilmour; eds. W.G. Dever, J.D. Seger, and S. Gitin.

Tell el-Hesi, publications, Joint Archaeological Expedition, Principal Investigator J. Blakely.

Tell el-Hesi Regional Survey Project, publications, Cobb Institute of Archaeology, Mississippi State University, Director J. Blakely.

Tel Kabri, survey, George Washington University/Tel Aviv University, Directors E. Cline and A. Yasur-Landau.

Tel Kedesh, excavations, University of Michigan, Directors S. Herbert and A. Berlin.

Lahav, publications, Phases I-II, Cobb Institute of Archaeology, Mississippi State University, Director J.D. Seger.

Lahav, publications, Phase III, Cobb Institute of Archaeology, Mississippi State University, Directors P. Jacobs and O. Borowski.

Meiron, publications (Nabratein), Duke University, Directors E.M. Meyers and C. Meyers.

Tel Miqne-Ekron, publications, Albright Institute and Hebrew University Institute of Archaeology, Directors S. Gitin and T. Dothan.

ASOR-Affiliated/AIAR-Assisted Excavation, Survey, and Publications Projects (29)–2006

The Neo-Assyrian Empire in the 7th Century BC Research Project, publications, Albright Institute and the Council of American Overseas Research Centers, Director S. Gitin.

Qana, excavations, and Regional Survey, publications, University of Puget Sound, Director D.R. Edwards.

Sepphoris Acropolis, publications, Duke University and the University of La Verne, Director J.L. Reed; Sepphoris Ein Zippori, publications, Duke University, Directors E.M. Meyers, C. Meyers, and J.P. Dessel.

Sepphoris Regional Project, publications, Duke University, Directors E.M. Meyers and C. Meyers.

Sepphoris, publications, University of South Florida, Directors J. Strange and T. McCollough.

Tell Taannek, publications, Palestinian Institute of Archaeology, Birzeit University, and American Schools of Oriental Research, Directors H. Salem and N. Lapp.

Tell el-Wawiyat, publications, University of Arizona, Principal Investigator W.G. Dever, Directors J.P. Dessel and B. Alpert Nakhai.

Tell Zaharah, excavations, Montana State University, S.L. Cohen.

Tel Zayit, publications, Pittsburgh Theological Seminary, Director R. Tappy.

Yotvata Excavations, University of North Carolina at Chapel Hill, Hebrew University, Florida International University, Directors, J. Magness, U. Avner, and G. Davies.



Renewed Excavations at Tell Gezer. Joint Project of the New Orleans Baptist Theological Seminary and the Israel Antiquities Authority, co-directed by (l-r): Steven Ortiz and Samuel Wolff

PROGRAM SCHEDULE 2006

- June 21 **Visit to the Albright** by students of Hebrew Union College-
(Wed) Jewish Institute of Religion, Cincinnati, led by Nili Fox
(S. Gitin).
- June 22 **Visit to the Albright** by students of the Hebrew University
(Thur) of Jerusalem, led by Ilan Sharon (S. Gitin).
- June 27 **Field Trip.** Gezer (S. Ortiz and S. Wolff).
(Tue)
- July 7 **Visit to the Albright** by Congregation Emanu-El of
(Fri) Westchester, Rye, NY, led by Dan Wolk (S. Gitin).
- July 27 **Field Trip.** Tel es-Safi/Gath (A. Maeir).
(Thur)
- Aug 21 **Field Trip.** Ramat Rahel (O. Lipschits).
(Mon)
- Sept 5 **Orientation and Planning Meeting.** AIAR Director, S.
(Tue) Gitin, Program Coordinator, Benjamin Dolinka, Appointees,
and Staff.
- Sept 6 **Neighborhood Orientation** (B. Dolinka) and **Albright**
(Wed) **Library Orientation** (S. Sussman, A. Halpern).
- Sept 8 **Library Orientation.** École Biblique (P. Trzopek).
(Fri)
- Sept 13 **Institutional Visit.** Rockefeller Museum Library (B. Brandl)
(Wed) and Israel Antiquities Authority Archives (A. Rochman-
Halperin).
- Sept 15 **Appointees' Tour of Albright Facility** (S. Gitin).
(Fri)
- Sept 21 **Field Trip.** Tel Aphek, 'Izbet Sartah (Y. Gadot).
(Thur)
- Sept 27 **Reception for Albright Appointees** at the Director's home
(Wed) (S. and C. Gitin).
- Oct 4 **Field Trip.** Ramat Rahel (Y. Gadot).
(Wed)

PROGRAM SCHEDULE

- Oct 5 **Reports on the Recent Excavations at Ramat Rahel.**
(Thur) Oded Lipschits, Senior Lecturer, Department of Archaeology, Tel Aviv University: "Goals of the Renewed Archaeological Project;" Benjamin Arubas, Institute of Archaeology, Hebrew University: "New Perspectives Based on Aharoni's Field Plans;" Yuval Gadot, Research Fellow, Hebrew Union College-Nelson Glueck School of Biblical Archaeology: "New Perspectives on the Stratigraphy in Area D;" Oded Lipschits: "The Water System from the Late Iron Age and Persian Periods, Area C."
- Oct 17 **Appointees' Evening with Guest Scholar.** Ephraim Stern,
(Tue) Professor Emeritus, Institute of Archaeology, Hebrew University.
- Oct 18 **Field Trip.** Ain Suba, Belmont Castle, "John the Baptist"
(Wed) Cave (S. Gibson).
- Oct 19 **Report.** Shimon Gibson, Senior Fellow, AIAR: "Iron Age
(Thur) Water Installations in Light of the Recent Excavations at the Suba Cave."
- Oct 24- **Field Trip.** Galilee: Tel Rehov, Tel Beth-Shean (N. Panitz-
25 (Tue- Cohen), Sussita, Hamat Gader, Tiberias (M. Aviam),
Wed) Sepphoris (R. Evyassaf), Beth-Shean (G. Mazor).
- Oct 26 **Workshop.** Anson Rainey, Annual Professor:
(Thur) "One hundred and Nineteen Years of Studying the Amarna Tablets."
- Oct 30 **Institutional Visit.** Israel Museum.
(Mon)
- Oct 31 **Albright Fellows' Annual Halloween Party.**
(Tue)
- Nov 1 **Lecture.** Christine Thompson, Samuel H. Kress Fellow:
(Wed) "Colonization, Pan-Hellenism and the East Mediterranean Pedigree of Western Monetary Economies." Opening Lecture of the Annual Program of Lectures of the Israel Numismatic Society, Israel Museum, Jerusalem.
- Nov 2 **Visit to the Albright** by the Archaeological Tours Israel
(Thur) group, led by Linda Feinstone (S. Gitin).



W.F. Albright Institute of Archaeological Research Appointees, Residents, and Staff, 2005/2006

Back Row (l-r): Director S. Gitin, Adam Gitin, Resident Pat Neu, Educational and Cultural Affairs Fellow Nava Panitz-Cohen, Research Fellow Deborah Cassuto, Senior Fellow Eliot Braun, Miqne Staff Viviana Moscovich, Groundsman Lutfi Mussa, Gardener Faiz Khalaf, Research Fellow Eric Tully.

Middle Row (l-r): Research Fellow Kent Reynolds, Maintenance Staff Ashraf Hanna, Cherie Gitin, Senior Fellow Shimon Gibson, Assistant to the Director Helena Flusfeder, Post-Doctoral Fellow Stephen Pfann, Senior Fellow Anna de Vincenz, Samuel H. Kress Fellow Christine Thompson, Andrew W. Mellon Fellow Octavian Bounegru, Adriana Bounegru, former Acting Institute Manager Sami Najjar, Research Fellow Baruch Brandl, Library Computer Consultant Avner Halpern, Chief Librarian Sarah Sussman, Chef Hisham M'farrah.

Front Row (l-r): Kitchen and Housekeeping Staff Nuha Khalil Ibrahim, Miqne Staff Moshe Ben-Ari, Senior Fellow Trude Dothan, Educational and Cultural Affairs Fellow Rodney Aist, National Endowment for the Humanities Fellow Carolina Aznar, Annual Professor Oded Borowski, Marcia Borowski, National Endowment for the Humanities Fellow Scott Bucking, Ernest S. Frerichs Fellow/Program Coordinator Jill Baker, Institute Manager Nadia Bandak, Miqne Staff Marina Zeltser, Kitchen and Housekeeping Staff Nawal Ibtisam Rshaid.

Row on Carpet (l-r): Educational and Cultural Affairs Fellow Dan Machiela, Jodi Machiela, Micah and Sophia Machiela.

Appointees and staff not in photo: Administrative Consultant Munira Said, National Endowment for the Humanities Fellow Daniel Falk, George A. Barton Fellow MiYoung Im, Samuel H. Kress Fellow Lisa Mahoney, Andrew W. Mellon Fellows Przemyslaw Dec and Iskra Vladimirova Hristova-Shomova, Senior Fellows Marwan Abu Khalaf, Garth Gilmour, Aren Maeir, Hani Nur el-Din, Hamdan Taha, Steven Weitzman, Samuel R. Wolff; Post-Doctoral Fellows Ibrahim Abu-Ammar, Susan Cohen, Mohammad Ghosheh, Salah H. Houdalieh, Laura Mazow, Stephen Rosenberg, Hamed Salem; Research Fellows David Ben-Shlomo, Amir Golani, Malka Hershkovitz, Wasfi Mohammed Kailani, Ianir Milevski, Tim Moore, Elaine Myers, Claire Pfann, Khader Salameh, Issa Sarie', Christopher Tuttle, Ross Voss, Anabel Zarzecki-Peleg, Alexander Zukerman.

PROGRAM SCHEDULE

- Nov 6 **Institutional Visit.** Institute of Archaeology,
(Mon) Hebrew University (I. Sharon).
- Nov 8 **Workshop.** Tzemah Yoreh, Educational and Cultural Affairs
(Wed) Fellow: 'The Yahwistic Source': Unity, Authorship, and
Redaction (E, J, P Sources—A Reevaluation).
- Nov 12 **Field Trip.** Jerusalem: Al-Aqsa Museum, Islamic Library,
(Sun) Haram al-Sharif (K. Salameh).
- Nov 15 **Field Trip.** Jerusalem: City of David (E. Mazar).
(Wed)



Albright Senior Fellow, Hani Nur el-Din

- Nov 15- **Annual Meeting of the American Schools of Oriental**
18 (Wed-**Research (ASOR)**, Washington, DC. Presentations by
Sat) Albright Appointees: Annual Professors Anson Rainey,
"Ghost Forms in Masoretic Toponyms;" Louise Hitchcock,
"Cypriot Rural Sanctuaries in Their Larger Eastern
Mediterranean Context;" Senior Fellows Jeffrey Chadwick,
"Hebron was Built Seven Years before Zoan in Egypt;"
Aren Maeir, "The 2006 Season of Excavations at Tell es-
Safi/Gath;" Hani Nur el-Din, "Evolution of the Sacred Area

PROGRAM SCHEDULE

at Tell es-Sultan, Jericho;" Post-Doctoral Fellows Salah al-Houdalieh, "Demolishing the Archaeological Heritage of Palestine: The Case of Saffa Village;" Hamed Salem, "Historical Comparisons of Two Palestinian Traditional Crafts Reflected on Pottery and Embroidery Designs;" Research Fellow Issa Sarie, "The Association Between Field Excavation and Restoration: A Case Study of Tell es-Sultan in Jericho."

Nov 23 **AIAR Appointees' Thanksgiving Luncheon.**
(Thur)



Albright Thanksgiving Luncheon, 2005

Nov 28 **Lecture.** Christine Thompson, Samuel H. Kress Fellow:
(Tue) "Silver in the Age of Iron: Sources, Contexts, and Functions." Zinman Institute of Archaeology, University of Haifa.

Nov 29 **Field Trip.** Beth Guvrin (M. Cohen), Maresha
(Wed) (G. Finkielsztejn).

Dec 6 **Field Trip.** Gezer (S. Wolff), Tell es-Safi/Gath (A. Maeir),
(Wed) Ashkelon (R. Voss), Ashdod Museum.

Dec 7 **Report.** Eilat Mazar, Visiting Scholar, Institute of
(Thur) Archaeology, Hebrew University: "The City of David Excavations."

Dec 11 **Institutional Visit.** Hebrew Union College-Nelson Glueck
(Mon) School of Biblical Archaeology (D. Packman).

PROGRAM SCHEDULE

- Dec 13 **Field Trip.** Hazor (M. Larkum), Dan (S. Sanders), Baniyas
(Wed) (M. Mihaljevic).
- Dec 14 **Workshop.** Trude Dothan, Senior Fellow, AIAR: "Deir el-
(Thur) Balah - An Egyptian Outpost on the Route from Egypt to
Canaan."
- Dec 21 **Workshop.** Gerald Finkielsztein, Senior Fellow, AIAR:
(Thur) "Amphora Stamps as Evidence for the History of Hellenistic
Samaria and the Southern Levant."
- Dec 25 **AIAR Appointees' Holiday Luncheon.**
(Mon)
- Dec 31 **AIAR Appointees' New Year Festivities.**
(Sun)

PROGRAM SCHEDULE 2007

- Jan 3 **Field Trip.** Qumran (H. Eshel).
(Wed)
- Jan 4 **Workshop.** Tomasz Polanski, Andrew W. Mellon Fellow:
(Thur) "Christian Art in Oriental Literatures: Greek, Syriac, and
Coptic Sources."
- Jan 8 **Institutional Visit.** Bible Lands Museum (J. Westenholtz).
(Mon)
- Jan 9 **Appointees' Evening with Guest Scholar.** Eliezer Oren,
(Tue) Department of Archaeology, Ben-Gurion University of the
Negev.
- Jan 11 **Report:** Aren Maeir, Senior Fellow, AIAR: "The Development
(Thur) and Transformation of Philistine Culture: The View from
the Iron IIA."
- Jan 17 **Field Trip.** Jerusalem: Western Wall tunnel, Old City (D.
(Wed) Bahat).
- Jan 18 **Report.** Dan Bahat, Professor, USMC, University of
(Thur) Toronto: "Was There a Decumanus in Jerusalem?"

PROGRAM SCHEDULE

- Jan 21 **Conversation** with Hershel Shanks, Editor, *Biblical Archaeology Review*. (Sun)
- Jan 25 **Workshop**. Stephen Pfann, Senior Fellow, AIAR: "An Anthropological Study of the Site of Qumran and Its Texts." (Thur)
- Jan 29 **Field Trip**. Israel Antiquities Authority Storage and Archives Facility, Beth-Shemesh (M. Saban). (Mon)
- Feb 1 **Workshop**. Malka HersHKovitz, Research Fellow, AIAR: "The Influence of Hellenistic Oil Lamps on the Production of Local Judean Lamps." (Thur)



Gerry D. Scott III, Director, American Research Center in Egypt

- Feb 7 **Appointees' Evening with Guest Scholar**. Gerry D. Scott III, Director, American Research Center in Egypt. (Wed)
- Feb 8 **Lecture**. Gerry D. Scott III, Director, American Research Center in Egypt: "Preserving Egypt's Past: The American Research Center in Egypt's Program of Conservation, Excavation, and Documentation since 1993." (Thur)
- Feb 14 **Field Trip**. Megiddo (N. Franklin), Acco, Hecht Museum (Wed) (M. Artzy).
- Feb 15 **Report**. Ilan Sharon, Senior Lecturer, Institute of Archaeology, Hebrew University, and Ayelet Gilboa, Lecturer, Institute of Archaeology, Haifa University: "Recent Excavations at Dor." (Thur)
- Feb 19 **Institutional Visit**. L.A. Mayer Museum of Islamic Art (Mon) (D. Hassan).

PROGRAM SCHEDULE

- Feb 22 **Workshop.** Lukás Pecha, Andrew W. Mellon Fellow: “The Administrative Structure of the Old Babylonian State under Samsu-Iluna.”
(Thur)
- Feb 28 **Field Trip.** Hazeva (Y. Israel), Yotvata (B. Dolinka), Timna (Y. Yekutieli), Horvat Dafit (B. Dolinka).
(Wed)
- Mar 1 **Workshop.** Louise Hitchcock, Annual Professor: “Do You See a Man Skillful in His Work? He Will Stand Before Kings: Exploring Inter-connections in Aegean and Levantine Architecture.”
(Thur)
- Mar 6 **Appointees’ Evening with Guest Scholar.** Yuval Goren, Professor, Institute of Archaeology, Tel Aviv University.
(Tue)
- Mar 8 **Workshop.** Benjamin Dolinka, Ernest S. Frerichs Fellow/Program Coordinator: “A Re-Assessment of Rudolph Cohen’s Excavations at Horvat Dafit in Light of Recent Research.”
(Thur)
- Mar 11- **Field Trip Abroad.** Jordan: Iraq el-Amir, Madaba, Mount 15 (Sun- Nebo, Amman, Mushatta, Qasr Kharaneh, Qusayr Amra, Thur) Qasr Hallabat, Azraq, Gadara, Pella, Jerash, Kerak, Shobak, Petra (B. Dolinka/C. Tuttle).
- Mar 12 **Yohanan Aharoni Memorial Day.** Institute of Archaeology, Tel Aviv University.
(Mon)



Field Trip to the Cave of John the Baptist. (l-r): Marcia and Oded Borowski, Eric Tully, Shimon Gibson (Project Director), Carolina Aznar, Rodney Aist, Jill Baker, Daniel Machiela, Christine Thompson and Traci Tully.

PROGRAM SCHEDULE

- Mar 14 **Lecture.** S. Gitin, Director, AIAR: “Ekron of the Philistines: (Wed) From Sea Peoples to Olive Oil Industrialists,” American Research Center in Egypt (ARCE), Cairo, (ASOR-Sponsored Program of Exchange Lectures in the Eastern Mediterranean Basin).
- Mar 22 **Irene Levi-Sala Annual Seminar.** Ben-Gurion University (Thur) of the Negev. Guest Lecturer, Martha Joukowsky, Professor Emerita, Brown University, “Current Archaeological Research at Petra.”
- Mar 29 **Workshop.** Seth Sanders, National Endowment for the (Thur) Humanities Fellow: “The Archaeology of Writing: Provenienced Judean Inscriptions from the Iron Age IIB as Evidence for Israelite Literacy and State Formation.”
- Apr 11 **Field Trip.** Tell Sheva (M. Suriano), Arad (A. Killebrew), (Wed) Aroer (G. Cook).
- Apr 12 **Workshop.** Marina Mihaljevic, Samuel H. Kress Fellow: (Thu) “Constantinopolitan Architects, Local Labor: Aspects of Middle Byzantine Architecture in the Provinces.”
- Apr 17 **Appointees’ Evening with Guest Scholar.** Tali Ornan, (Tue) Curator of West Asiatic Antiquities, Israel Museum.
- Apr 18 **Field Trip.** Beth-Shemesh, Lachish, Tell Beit Mirsim (Wed) (G. Barkay).
- Apr 19 **Workshop.** Edward Silver, Educational and Cultural Affairs (Thur) Fellow: “The Schools of Jeremiah: Signs, Symbols, and Text Formation in the Book of Jeremiah.”
- Apr 26 **Workshop.** Dieter Vieweger, Senior Fellow, AIAR: “Tell (Thur) Zira’a (3200 B.C.-1900 A.D) – Five Thousand Years of Settlement Planning: Engineering Technology and Trade Relations in Northern Palestine.”
- May 2 **Field Trip.** Jerusalem Archaeological Park (H. Geva). (Wed)
- May 3 **Workshop.** Mary Larkum, Educational and Cultural Affairs (Thur) Fellow: “Foodways and Ethnicity in the South Levantine Early Iron II (10th-8th Centuries): A Microscopic Perspective.”

PROGRAM SCHEDULE

- May 4 **Workshop.** Matthew Suriano, George A. Barton Fellow:
(Fri) “The Jerusalem Tumuli and the Royal Funerary Cult of Judah.”
- May 9 **Field Trip.** Shivta, Mamshit, Avdat (T. Erickson-Gini).
(Wed)
- May 10 **Appointees Group Photo.**
(Thur)
- May 10 **Workshop.** Ann Killebrew, National Endowment for the
(Thur) Humanities Fellow: “Tel Miqne-Ekron Report of the 1985-
1987 and 1990 Excavations in Field INE: The Iron Age –
A Progress Report.”



Educational and Cultural Affairs Fellows (l-r): Rodney Aist,
Nava Panitz-Cohen and Daniel Machiela.

- May 11 **Workshop.** Karen Britt, Educational and Cultural Affairs
(Fri) Fellow: “Heaven on Earth: The Role of Architectural
Decoration in the Creation of Sacred Space in Byzantine
Palaestina and Arabia.”
- May 16 **Field Trip.** Caesarea (P. Gendelman), Dor (A. Gilboa).
(Wed)
- May 17 **Workshop.** Jan Dusek, Andrew W. Mellon Fellow: “Critical
(Thur) Study of the New Epigraphic Evidence Related to the
History of the Province of Samaria from the End of the
Persian Period to the Roman Period, 4th century BCE-
1st Century CE.”

PROGRAM SCHEDULE

May 19 **Appointees' Annual Spring "Shwarmafest."**
(Sat)

May 31 **Visit to the Albright.** Students of the Hebrew University
(Thur) S. Gitin).

June 24 **Visit by Members of the Oriental Institute/University
(Sun) of Chicago Tour,** led by Linda Feinstone (S. Gitin).



Albright Schwarmafest, 2005, (l-r): Munira Said, Stevie Pfann, Shoshana Pfann, Cherie Gitin, Noam Sternberg, Adam Gitin, Ginny Ben-Ari and Khader Salameh



Albright Schwarmafest, 2005, (l-r): Dieter Vieweger, Yuri Stoyanov and Trude Dothan.

RESEARCH PROJECTS OF ALBRIGHT APPOINTEES, 2006/2007

The Art and Architecture of the Hamra Palace in Andalusian Granada
(Ibrahim Abu-Ammar)

Islamic Jerusalem (Marwan Abu Khalaf)

Mesopotamian Witchcraft Literature (Tzvi Abusch)

The Image of Jerusalem in Hugesbure's 'Vita Willibaldi' (Rodney Aist)

The MB IIA Funeral Kit in Canaan (Jill Baker)

The Landscape of Ain Arik Village during the Ottoman Period (Jamal Bargouth)

An Analysis of Egyptian Artifacts from Tel Miqne-Ekron (Baruch Brandl)

Researching Early Levels at Megiddo (Eliot Braun)

Heaven on Earth: The Role of Architectural Decoration in the Creation
of Sacred Space in Byzantine Palaestina and Arabia (Karen Britt)

Glass Finds from Hippos/Sussita (Israeli-Polish Excavations, 2000-
2006) (Mariusz Burdajewicz)

The Textile Industry in the Iron Age Levant: A Contextual Approach
(Deborah Cassuto)

Assyrian and Judean Influences at Gath of the Philistines
(Tell es-Safi) during the Iron Age II-B (Jeffrey Chadwick)

Tell Zaharah: A Case Study for the Middle Bronze II Period in the
Jordan Valley (Susan Cohen)

Bathing on the Frontier: A Study of Roman Military Baths in Judaea-
Palaestina (Robert Darby)

Horvat Dafit: Final Report on Rudolph Cohen's Excavations at a
Nabataean and Roman Structure in the South-Western Wadi Arava
Valley, 1983-1984 (Benjamin Dolinka)

The Philistine Ceramic Corpus of the Iron Age I at Tel Miqne-Ekron
(Trude Dothan)

RESEARCH PROJECTS OF ALBRIGHT APPOINTEES, 2006/2007

A Critical Study of the New Epigraphic Evidence Related to the History of the Province of Samaria from the End of the Persian Period to the Roman Period, 4th century BCE–1st century CE (Jan Dusek)

Amphora Stamps as Evidence for the History of Hellenistic Samaria and the Southern Levant (Gerald Finkielsztein)

The Social Life of Jerusalem in the Early and Middle Ottoman Period (Mohammad Ghosheh)

The Mount Zion Excavation Project in Jerusalem (Shimon Gibson)

The Iron Age IIA-B Ceramic Corpus at Tel Miqne-Ekron: A Case Study for Philistia (S. Gitin)

The Development, Significance, and Function of Jewelry and the Jeweler's Craft in the Land of Israel during the Iron Age II Period (Amir Golani)

A Corpus of Hellenistic-Roman Glyptics in Eretz-Israel (Malka HersHKovitz)

"Do You See a Man Skillful in his Work? He Will Stand Before Kings": Exploring Interconnections in Aegean and Levantine Architecture (Louise Hitchcock)

The Development of Early Bronze Age Material Culture (Salah Houdalieh)

The Masoretic System of Biblical Hebrew Cantillation and Prosodic Phonology (Laszlo Hunyadi)

Tel Miqne-Ekron Report of the 1985-1987 and 1990 Excavations in the Field INE Sondage: The Iron Age (Ann Killebrew)

Biblical History and Archaeology on the Main Line, Philadelphia (Naomi Koltun-Fromm)

Foodways and Ethnicity in the South Levantine Early Iron II (10th-8th Centuries): A Microscopic Perspective (Mary Larkum)

Scribal Hermeneutics in the Textual History of the Book of Ezekiel (Timothy Mackie)

The Development and Transformation of Philistine Culture: The View from the Iron IIA (Aren Maeir)

RESEARCH PROJECTS OF ALBRIGHT APPOINTEES, 2006/2007

Constantinopolitan Architects, Local Labor — Aspects of Middle Byzantine Architecture in the Provinces (Marina Mihaljevic)

The Exchange of Goods in the Early Bronze Age of the Southern Levant (Ianir Milevski)

The Survival of Classical Greek Literature into the Early Islamic Period (Tim Moore)

Symbolism and Cult Practice — Fact and Fiction: A Comparative Study of Ancient Near Eastern Phenomena (Hani Nur el-Din)

Iron Age I Stratigraphy and Pottery from Tel Beth-Shean (Nava Panitz-Cohen)

The Administrative Structure of the Old Babylonian State under Samsu-Iluna (Lukás Pecha)

The Testament of Abraham (Claire Pfann)

An Anthropological Study of the Site of Qumran and Its Texts (Stephen Pfann)

Christian Art in Oriental Literatures: Greek, Syriac, and Coptic Sources (Tomasz Polanski)

Detailed Commentary on all of the Tell el-Amarna Letters (Anson Rainey)

Architecture and Archaeology of the Tobiad Estate at Airaq al-Amir in Jordan (Stephen Rosenberg)

The Inscriptions from the Islamic Museum, al-Haram al-Sharif: From the Roman to the Ottoman Period (Khader Salameh)

Dynamic Stability and Change in the Palestinian Cultural Landscape: The Birzeit Region as a Case Study (Hamed Salem)

The Archaeology of Writing: Provenienced Judean Inscriptions from the Iron Age IIB as Evidence for Israelite Literacy and State Formation (Seth Sanders)

Refining the Search for Basaltic Quarries and Workshops in Northern Israel: A Geoarchaeological Approach (Joan Schneider)

The Schools of Jeremiah: Signs, Symbols, and Text Formation in the Book of Jeremiah (Edward Silver)

Embracing Script and Language as Criteria to Globalization (Itzhaq Shai)

**RESEARCH PROJECTS OF ALBRIGHT APPOINTEES,
2006/2007**

The Ethnogenesis of Ancient Israel (Kent Sparks)

The Evolution and Interrelationship between Christian and Islamic Heterodox and Mystical Traditions in the East Mediterranean in the Late Byzantine and Ottoman Periods (Yuri Stoyanov)

Subsistence in the Desert – Through a Biomolecular Analysis of the Negebite Ware (Channa Cohen Stuart)

The Jerusalem Tumuli and the Royal Funerary Cult of Judah (Matthew Suriano)

The Excavation of Tawaheen es-Sukker, Jericho (Hamdan Taha)

Silver in the Age of Iron and the Orientalizing Economies of Archaic Greece (Christine Thompson)

The Chronology of the Tamassos-Lambertis Necropolis (Dieter Vieweger)

Ceramic and Small Finds from the Excavations at Ramle (Anna de Vincenz)

The Middle Bronze Age Gates at Ashkelon (Ross Voss)

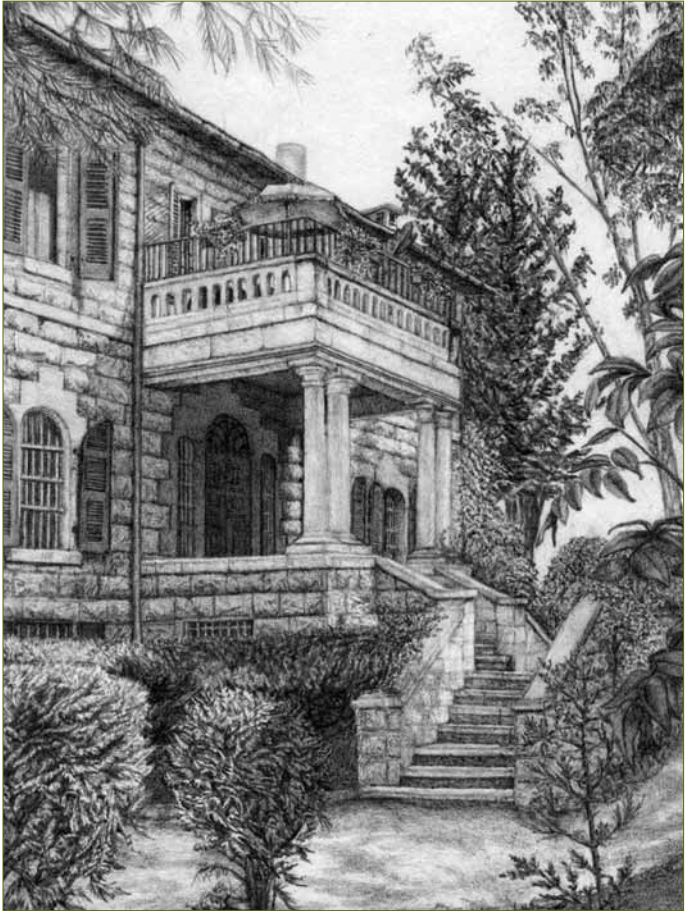
The Renewed Excavations at Tell Gezer (Samuel Wolff)

Libraries and Research Institutions of the Christian Denominations in Jerusalem (Aharon Yaffe)

‘The Yahwistic Source’: Unity, Authorship, and Redaction (E, J, P Sources — A Reevaluation) (Tzemah Yoreh)

Trajectories of Iron Age Settlement in Northern Israel and Their Implications for Chronology: The Iron Age IIA—IIB Transition Phase—Parallels with Other Periods and Cultures in the Eastern Mediterranean (Anabel Zarzecki-Peleg)

The Iron Age I Ceramic Corpus from Fields III and IV at Tel Miqne-Ekron (Alexander Zukerman)



Rendition of the entrance to the Director's House at the Albright Institute
By Linda Lundbom

ALBRIGHT STAFF AND APPOINTEES

Dorot Director and Professor of Archaeology S. Gitin

STAFF

Assistant to the Director	Helena Flusfeder
Institute Manager	Nadia Bandak
Administrative Consultant	Munira Said
Chief Librarian	Sarah Sussman
Librarian	Kate Masliansky
Library Computerization Staff	Avner Halpern, Diana Steigler

Appointees 2006/2007

Annual Professors

Anson Rainey, Tel Aviv University (Emeritus)

Louise Hitchcock, University of Melbourne

National Endowment for the Humanities Fellows

Seth Sanders, Independent Researcher

Ann Killebrew, Pennsylvania State University

Ernest S. Frerichs Fellow/Program Coordinator

Benjamin Dolinka, University of Liverpool

George A. Barton Fellow

Matthew Suriano, University of California at Los Angeles

Samuel H. Kress Fellows

Marina Mihaljevic, Princeton University

Christine Thompson, University of California at Los Angeles

Educational and Cultural Affairs Fellows

Mary Larkum, University of Massachusetts, Amherst

Edward Silver, University of Chicago

Tzemah Yoreh, Hebrew University of Jerusalem

Karen Britt, University of Louisville

Andrew W. Mellon Fellows

Tomasz Polanski, Jagiellonian University, Krakow

Lukás Pecha, University of West Bohemia, Pilsen, Czech Republic

Laszlo Hunyadi, University of Debrecen, Hungary

Jan Dusek, Charles University, Prague, Czech Republic

Mariusz Burdajewicz, National Museum of Poland, Warsaw

Associate Fellows

Senior Fellows

Marwan Abu Khalaf, Al-Quds University
Tzvi Abusch, Brandeis University
Eliot Braun, Israel Antiquities Authority (Emeritus)
Jeffrey Chadwick, Brigham Young University Jerusalem Center
Susan Cohen, Montana State University
Trude Dothan, Hebrew University of Jerusalem (Emerita)
Gerald Finkielsztein, Israel Antiquities Authority
Shimon Gibson, Independent Researcher
Naomi Koltun-Fromm, Haverford College
Aren Maeir, Bar-Ilan University
Hani Nur el-Din, Al-Quds University
Stephen Pfann, University of the Holy Land
Anson Rainey, Tel Aviv University (Emeritus)
Joan Schneider, University of California, Riverside
Kent Sparks, Eastern University, Pennsylvania
Yuri Stoyanov, Kenyon Institute, Jerusalem
Hamdan Taha, Palestinian Department of Antiquities
Dieter Vieweger, German Protestant Institute of Archaeology
Anna de Vincenz, Independent Researcher (Miqne Fellow)
Samuel R. Wolff, Israel Antiquities Authority

Post-Doctoral Fellows

Ibrahim Abu-Ammar, Al-Quds University
Jill Baker, Independent Researcher
Mohammad Ghosheh, Al-Quds University
Salah H. Houdalieh, Al-Quds University
Ianir Milevski, Israel Antiquities Authority
Stephen Rosenberg, Independent Researcher
Hamed J. Salem, Birzeit University
Aharon Yaffe, Interdisciplinary Institute, Herzliya
Anabel Zarzecki-Peleg, Hebrew University of Jerusalem

Research Fellows

Rodney Aist, University of Wales at Lampeter
Jamal Bargouth, Palestinian Institution for Cultural
Landscape Studies (al-Mashhad)
Baruch Brandl, Israel Antiquities Authority
Deborah Cassuto, Bar-Ilan University
Robert Darby, University of Missouri-Columbia
Amir Golani, Israel Antiquities Authority
Malka HersHKovitz, Nelson Glueck School of Biblical Archaeology
Timothy Mackie, University of Wisconsin-Madison
Tim Moore, Kenyon Institute, Jerusalem
Nava Panitz-Cohen, Hebrew University of Jerusalem
Claire Pfann, University of the Holy Land
Khader Salameh, Islamic Museum, al-Haram al-Sharif, Jerusalem
Itzhaq Shai, Bar-Ilan University
Channa Cohen Stuart, Vrije Universiteit Amsterdam, The Netherlands
Ross Voss, Ashkelon Excavation Project
Alexander Zukerman, Hebrew University of Jerusalem